

# Radio Commander

**New Operation and Maintenance Center for Today's and Tomorrow's Networks**

Merging Operation and Maintenance for both second and third generation Mobile Radio Networks within one common software platform, the Radio Commander introduces an all new concept for Mobile Network Element Management.

The Radio Commander supports different Radio Technologies, as well as the respective hardware equipment and offers a seamless evolution to third generation cellular networks (3G). This allows the operator to benefit from investment protection, reduced training and operating costs in a highly competitive market.



## Radio Commander Highlights

- Common Management for different Radio Technologies
- Integrated Tool Set
- Scalability to support network growth for fast Time-to-Market
- Extensive features to support multi-vendor operations
- Optimization of the operator workflow

## Product Profile

One of the key advantages of the Radio Commander is its common platform concept, allowing the management of both second generation (2G) and third generation (3G) networks on the same user interface. So, GSM and UMTS Radio Networks can be managed in parallel.

The Radio Commander will comprise additional management capabilities for the relevant technologies: GPRS, HSCSD, Corporate GSM, EDGE, and TD-SCDMA. With its future-proof system architecture, the Radio Commander exceeds the requirements of today and meets the challenges of tomorrow's Element Management.

## Feature Overview

### Operability

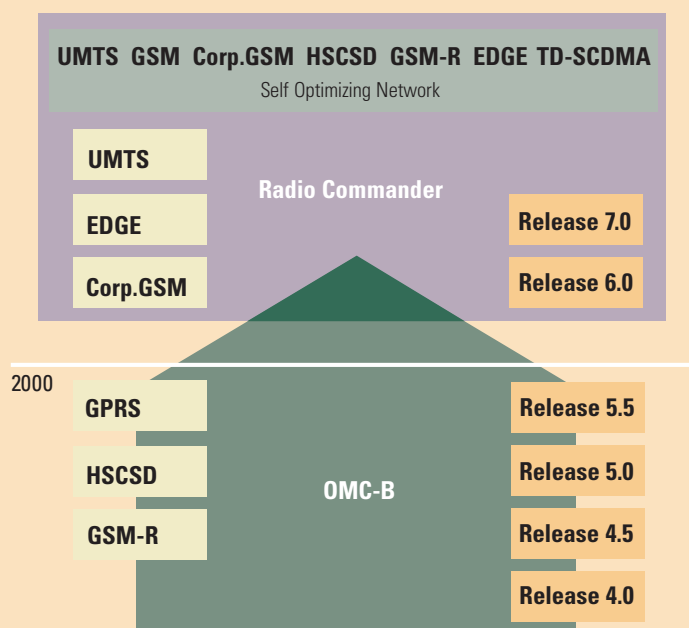
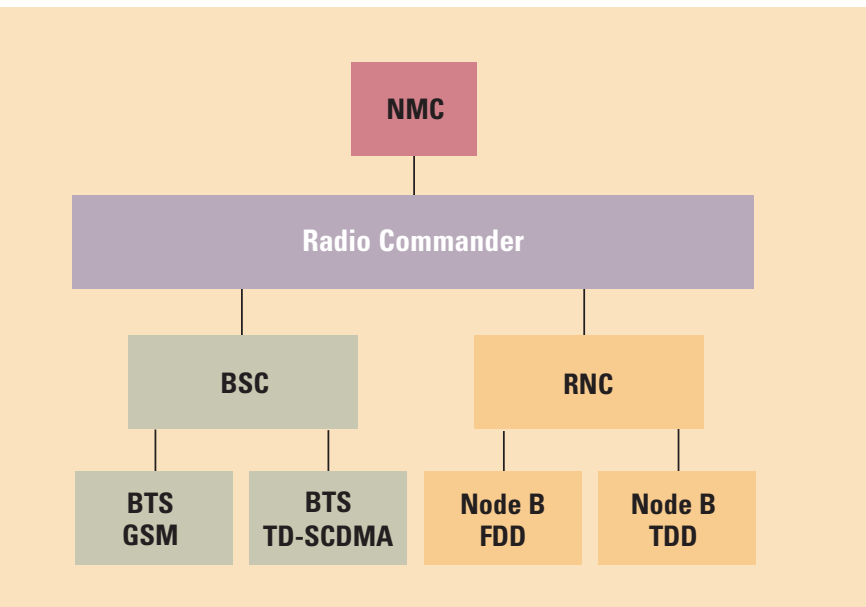
- 2G/3G multi-technology handling
- New highly configurable GUI
- Flexible Network Editor tool
- Multi-session support
- Operator-defined views
- Independent GUI / CLI sessions
- Integration of applications: Trouble ticketing, alarm mailing
- Context sensitive on-line HTML documentation
- Find & filter, event forwarding discrimination
- Remote Web Access

### Integrated Tool Set for Configuration-, Fault- and Performance Management

In addition to the basic management functions of the Radio Commander the optional toolset offers complementary enhancements for operation process support (e.g. Data Base generation, interface to network planning, performance management analysis).

#### Configuration Management (CM)

- Possibility to configure hardware of all network elements and also cell planning
- Automatic interworking with cell planning tools
- Enhanced network planning support with S.M.A.R.T. (Siemens Mobile Adaptive Radio Technology)



#### Fault Management (FM)

- Fault statistics
- Trend analysis
- Fault localization
- Fault correction
- Alarm surveillance
- Alarm administration
- NMC related mediation (Q3-Interface)

#### Performance Management (PM)

- Administration of measurements
- Postprocessing of all performance management data provided by the Radio Commander Tool Set

State-of-the-art,  
industry-standard hardware  
and software platform

Source: Sun Microsystems, Inc.



### Scalability for easy network expansion

- Scalable hardware
  - Load distribution to several O&M processors (OMPs) & within same OMP to several CPUs
  - Multiple OMP hardware server provide information transparently to all OMTs

### Software Management

- Administration, remote download and activation of network element software loads
- Software version handling incl. database consistency checks

### Security Management

- Advanced user profile administration
- Flexible and secure access on Network Elements

### Customer Benefits

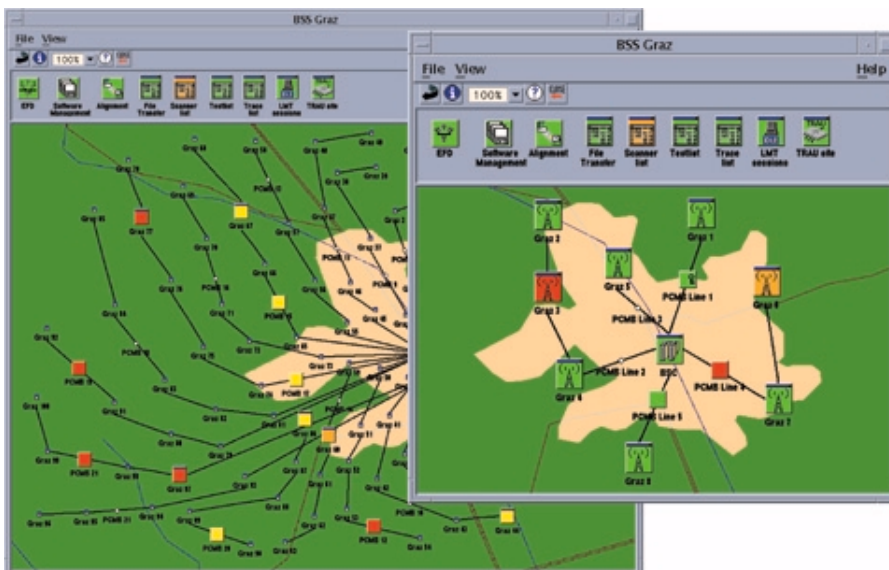
The Radio Commander improves the overall cost of ownership position by:

- Quantum leap in state-of-the-art O&M for growing networks & growing requirements!
- More Continuity
- New Open System
- Easier Operability
- Increased Scalability
- Higher Performance & Capacity

### Prepared for the Future

The Radio Commander is an important prerequisite to stay ahead in a very competitive market. Due to the seamless software migration path to 3rd generation cellular networks the Radio Commander significantly reduces cost of ownership.

- Allows the rapid integration of new services in an economic way
- Comprises leading edge technology to meet the O&M requirements for state-of-the-art Mobile Radio Networks
- Is well prepared for the convergence of networks: mobile-fixed, voice-data
- Comprises common management for existing and new technologies: GSM-BSS, GPRS, EDGE, UMTS, UTRAN (FDD and TDD), Corporate GSM, TD-SCDMA



### Abbreviations:

2G	Second Generation
3G	Third Generation
BSC	Base Station Controller
BSS	Base Station Subsystem
BTS	Base Transceiver Station
CLI	Command Line Interface
CM	Configuration Management
CPU	Central Processor Unit
EDGE	Enhanced Data rates for GSM Evolution
FDD	Frequency Division Duplex
FM	Fault Management
GPRS	General Packet Radio Service
GSM	Global System for Mobile Communication
GSM-R	GSM for Railways
GUI	Graphical User Interface
HSCSD	High Speed Circuit Switched Data

NE	Network Element
NMC	Network Management Center
O&M	Operation & Maintenance
OMC-B	Operation and Maintenance Center of the Base Station System
OMP	Operation & Maintenance Processor
OMT	Operation & Maintenance Terminal
PM	Performance Management
RNC	Radio Network Controller
TDD	Time Division Duplex
TD-SCDMA	Time Division Synchronous Code Division Multiple Access
UMTS	Universal Mobile Telecommunications System
UTRAN	Universal Terrestrial Radio Access Network



**Contact us!**

**Visit our website at  
[www.siemens.com/mobile/networks](http://www.siemens.com/mobile/networks)**