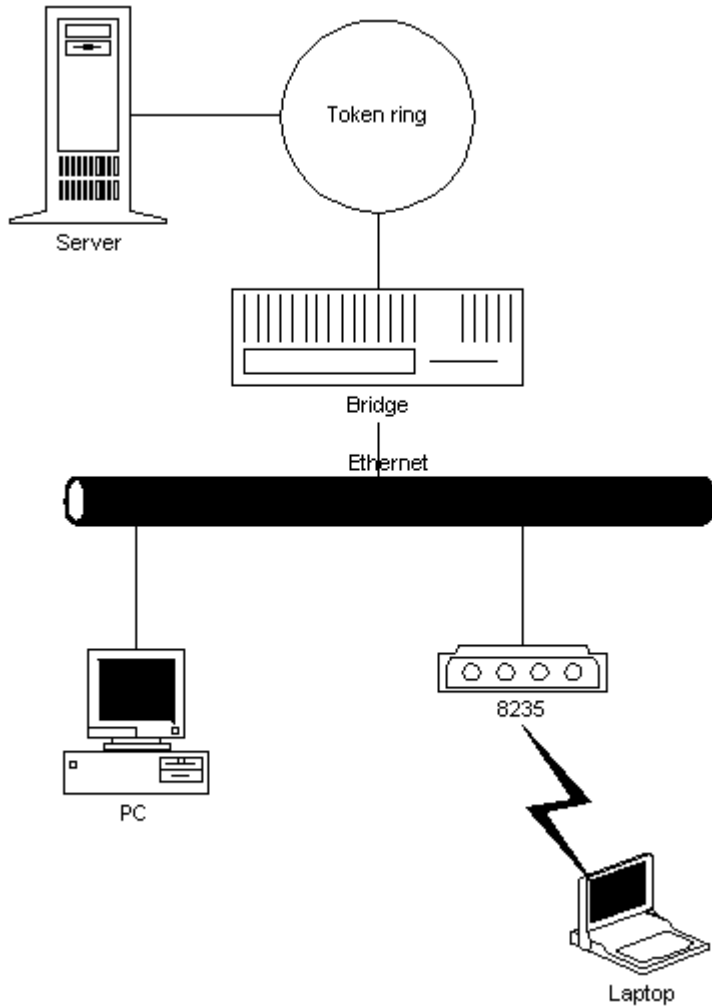


Written by: Speed.  
For: Reclaim The Telephones. [<http://www.rttcrew.com>]  
Time/Date: 14:00 2000-06-05

## IBM8235



## En total genomgång om vad IBM8235-systemet's alla kommandon gör.

Starting Tacacs Plus Authentication...

Username: root

Password?

Authenticating user 'root' locally

Local Authentication succeeds.

IBM 8235-021/051, Version 4.5.4 97/02/28

### *Här är alla kommandon i helpavsnittet och vad dom gör på systemet*

IBM8235 UTBYTT# help

alert	Send text alert to all dial-in users
busy-out line <number>	Busy-out serial line modem
clear <keyword>	Reset part of the system
comment	Enter a comment into the log
configure	Enter a configuration session
connect <port pool>	Connect to a shared serial port
crashdump	Write crashblock to log
disable	Disable privileges
help	List of available commands
initialize <keyword>	Reinitialize part of the system
lan-to-lan <keyword>	Manage LAN-to-LAN connections
passwd	Change password
ping <IP host>	Send ICMP echo to IP host
ppp	Start a PPP session
quit	Quit from shell
reboot	Schedule reboot
show <keyword>	Information commands, type "show ?" for list
slip	Start a SLIP session
telnet <IP host>	Start a Telnet session
testline	Test a line

## *Här går jag igenom kommandona mer grundligt*

### **Alert**

IBM8235 UTBYTT# alert

Enter text alert to all dial-in users (up to 92 characters): y0 4r3 0wN3d ;)

---

### **Busy-out line**

IBM8235 UTBYTT# busy-out line

Usage: busy-out line [line number]

---

### **Clear**

IBM8235 UTBYTT# clear

Incomplete command. Type 'clear clear ?' for help.

IBM8235 UTBYTT# clear ?

arp-cache	Clear IP ARP cache
bridge	Clear bridging tables
crashblock	Clear crashblock written by 'crashdump' command
dhcp <IP address>	Force the release of a DHCP lease
line <number>	Clear serial line
log	Clear internal activity log
pool <IP address>	Clear a pooled IP address
user <user name>	Clear user's failed attempt count

IBM8235 UTBYTT# clear arp-cache

Incomplete command. Type 'clear arp-cache ?' for help.

IBM8235 UTBYTT# clear arp-cache ?

ip [addr] Clear all IP ARP cache entries or only [addr]

IBM8235 UTBYTT# clear bridge

Incomplete command. Type 'clear bridge ?' for help.

IBM8235 UTBYTT# clear bridge ?

user-route Clear the User Routing Table

IBM8235 UTBYTT# clear crashblock

IBM8235 UTBYTT#

IBM8235 UTBYTT# clear dhcp

DHCP is DISABLED

IBM8235 UTBYTT# clear line

Usage: clear line [line number]

IBM8235 UTBYTT# clear pool

Usage: clear pool [ ip-address ]

IBM8235 UTBYTT# clear user

Usage: clear user [ user-name ]

---

### **Comment**

IBM8235 UTBYTT# comment

Enter comment for log (up to 80 characters):

---

## Configure

IBM8235 UTBYTT# configure

Enter configuration file lines. Edit using:

^X, ^U clear line

^H, DEL delete one character

^W delete one word

^R retype line

Start by entering section header in square brackets []

Finish by entering ^D or ^Z on a new line.

config>

---

## Connect

IBM8235 UTBYTT# connect

Must give a port pool name, one of:

All\_Ports

Dialin

ISDN

Datalock

IBM8235 UTBYTT# connect All\_Ports

All lines of port pool 'Dialin' are busy.

Escape character is CTRL-^ (30).

Type the escape character followed by C to get back,  
or followed by ? to see other options.

IBM8235 UTBYTT# connect Dialin

All lines of port pool 'Dialin' are busy.

IBM8235 UTBYTT# connect ISDN

All lines of port pool 'ISDN' are busy.

IBM8235 UTBYTT# connect Datalock

All lines of port pool 'Datalock' are busy.

---

## Crashdump

IBM8235 UTBYTT# crashdump

IBM8235 UTBYTT#

---

## Disable

IBM8235 UTBYTT# disable

IBM8235 UTBYTT:

---

## Help

IBM8235 UTBYTT# help	
alert	Send text alert to all dial-in users
busy-out line <number>	Busy-out serial line modem
clear <keyword>	Reset part of the system
comment	Enter a comment into the log
configure	Enter a configuration session
connect <port pool>	Connect to a shared serial port
crashdump	Write crashblock to log
disable	Disable privileges
help	List of available commands
initialize <keyword>	Reinitialize part of the system
lan-to-lan <keyword>	Manage LAN-to-LAN connections
passwd	Change password
ping <IP host>	Send ICMP echo to IP host
ppp	Start a PPP session
quit	Quit from shell
reboot	Schedule reboot
show <keyword>	Information commands, type "show ?" for list
slip	Start a SLIP session
telnet <IP host>	Start a Telnet session
testline	Test a line

---

## Initialize

IBM8235 UTBYTT# initialize  
Incomplete command. Type 'initialize ?' for help.  
IBM8235 UTBYTT# initialize ?

dhcpserverlist	reset dhcp server list
line <number>	reconfigure serial line
modem <number>	reconfigure internal slot or modem device
radiusacctserverlist	reset RADIUS accounting server list
slot <number>	reconfigure internal slot or modem device

ville inte riskera att förstöra nått så jag ändrade inget här...

---

## Lan-to-lan

IBM8235 UTBYTT# lan-to-lan  
Incomplete command. Type 'lan-to-lan ?' for help.  
IBM8235 UTBYTT# lan-to-lan ?  
On the originating side of a LAN-to-LAN <site> is the site name  
On the answering side of a LAN-to-LAN <site> is the name shown  
in 'show lan-to-lan'

connect <site pword>	Establish a LAN-to-LAN connection
disconnect <site>	Teardown a LAN-to-LAN connection
resume <site>	Resume a suspended LAN-to-LAN connection
suspend <site>	Suspend a LAN-to-LAN connection

---

## Passwd

IBM8235 UTBYTT# passwd  
Changing password for "root"  
Enter old password:  
Enter new password:  
Verify password:  
Failure - Change password not supported.

---

## **Ping**

IBM8235 UTBYTT# ping

Usage: ping [ ip-address ]

Prod8235# ping 10.161.224.1

10.161.224.1 is alive: ttl=255

---

**PPP**

IBM8235 UTBYTT# ppp  
Not authorized for dialin on this account.

---

**Quit**

IBM8235 UTBYTT# quit  
Disconnecting and resetting line.

---

**Reboot**

IBM8235 UTBYTT# reboot  
Show connected users first?

---

**Show**

Beskrivs en bit längre ner pga att det tar så mycket plats så det är värt ett eget "avsnitt".

---

**SLIP**

IBM8235 UTBYTT# slip  
Not authorized for dialin on this account.

---

**Telnet**

IBM8235 UTBYTT# telnet  
Usage: telnet [ ip-address <binary> <port-number> ]  
IBM8235 UTBYTT# telnet 10.162.24.33  
Trying 10.162.24.33 at 10.162.24.33...  
Connected.  
Escape character is '^'.

```
*****
*
*
*          xxxxx.sys.xxxx.se
*
*          W A R N I N G !
*
*          Access to this system is restricted.
*          All connections are monitored and logged.
*
*
*
*****
```

login: abc  
Login incorrect <--- mhm, man kan alltså se vilka konton det finns genom att gissa bara.

login: root  
Password:  
Login timed out after 60 seconds  
Connection closed.

IBM8235# telnet 10.161.224.1  
Trying 10.161.224.1 at 10.161.224.1...  
Connected.  
Escape character is '^']'.

```
*****  
*                                                                 *  
*   Du har kommit till router gw-h03.net.xxxx.se                 *  
*   Kontakta kommunikationsgruppen xxx-xxx-xxx                 *  
*                                                                 *  
*****
```

#### User Access Verification

Username: root  
Password:  
  
% Authentication failed.

IBM8235# telnet 193.234.187.250  
Trying 193.234.187.250 at 193.234.187.250...  
Connected.  
Escape character is '^']'.  
telnet (cyklop)  
AIX Version 4  
(C) Copyrights by IBM and by others 1982, 1996.  
login: root  
root's Password:  
3004-007 You entered an invalid login name or password.

IBM8235 UTBYTT# telnet 10.161.224.0  
Trying 10.161.224.0 at 10.161.224.0...  
Connected.  
Escape character is '^']'.  
@ Userid: root  
Password?  
IBM 8235-021/051, Version 4.5.4 97/02/28  
Prod8235#

---

#### Testline

IBM8235 UTBYTT# testline  
Usage: testline [ line number ] [ phone number ]

---



### Här är 'show' kommandot

```
IBM8235 UTBYTT# show ?
account <keyword>      Accounting information, type "show account?" for list
arp                    ARP cache
bridge <keyword>      Bridging information, type "show bridge ?" for list
buffers                Buffer usage
configuration          Stored configuration, may specify sections
interfaces [name1 [name2 ... ] Interface information
ip <keyword>           Internet Protocol information, type "show ip ?" for list
lan-to-lan             LAN-to-LAN connections
lines                  Serial line information
log                    Log buffer
modem <keyword>       Internal modem information, type "show modem ?" for list
netbeui <keyword>     NetBeui information, type "show netbeui ?" for list
novell <keyword>      NetWare information, type "show novell ?" for list
ppp                    PPP multilink bundles and links
processes              Active system processes
security               Internal userlist
semaphores             Active system semaphores
slot <keyword>         Internal serial slot information, type "show slot ?" for
list
upload                Upload information
users                  Current users of system
version                General system information
virtual-connections   Virtual Connection information
```

---

#### Account Information

```
IBM8235 UTBYTT# show account ?
global                Show general accounting information
records                Show accounting records
```

```
IBM8235 UTBYTT# show account global
Accounting disabled
```

```
IBM8235 UTBYTT# show account records
Accounting disabled
```

---

#### ARP Information

```
IBM8235 UTBYTT# show arp
Protocol  Address      Age  Hardware Addr  Type  Interface
Internet  10.161.224.1  3m  C0-00-00-01-00-00 ARPA  Token_Ring:IP
Internet  10.161.224.32 3m  00-06-29-C0-C1-BC ARPA  Token_Ring:IP
```

---

## Bridge Information

IBM8235 UTBYTT# show bridge ?

map                      Transparent Address Mappings  
route                    Source Route Routing Table  
table                    Source Route Bridge Table  
user                     User Routing Table

IBM8235 UTBYTT# show bridge map

map                      Transparent Address Mappings

IBM8235 UTBYTT# show bridge route

route                    Source Route Routing Table

IBM8235 UTBYTT# show bridge table

table                    Source Route Bridge Table

IBM8235 UTBYTT# show bridge user

user                     User Routing Table

---

## Buffers Information

IBM8235 UTBYTT# show buffers

48 buffers available (0 drops)

FREE	33	0 max	0 reqs	0 drops
ARP	0	1 max	2660 reqs	0 drops
DATA	3	157 max	90134696 reqs	0 drops
SERIAL	0	13 max	665607 reqs	0 drops
TOKEN	12	162 max	102135584 reqs	0 drops

Tiny buffers (144 bytes)

9 allocated 26 max

9 free 0 min

38266 requested, 0 drops, 18 creates, 17 trims

Small buffers (608 bytes)

8 allocated 8 max

8 free 8 min

0 requested, 0 drops, 0 creates, 0 trims

Medium buffers (1536 bytes)

22 allocated 164 max

7 free 0 min

192752761 requested, 0 drops, 2730483 creates, 2730469 trims

Large buffers (4544 bytes)

9 allocated 41 max

9 free 0 min

147520 requested, 0 drops, 1540 creates, 1531 trims

---

## Configuration Information

IBM8235 UTBYTT# show configuration

[System]

RemoteBoot=0

Name="IBM8235 UTBYTT"

VirtualConnections=1

MaxConnections=8

GMTOffset=0

[Serial\*]

Enabled=1

Name=Dialin

ModemName=" <No Modem Selected> "

Flow=None

Rate=9600

LanToLanOriginate=1

LanToLanAnswer=1

LeasedLine=0

Sync=0

ISDNRateAdaption=None

Speed=64000

ISDNTransferCap=UDI

VirtualDialin=1

VirtualLanToLan=1

CardType=Serial

ISDNIncomingCallDefault=sync

ISDNInit=ATS0=1

MTU=1500

[TCP/IP]

Enabled=1

DefaultRoute=10.161.224.1

DomainNameServer=10.162.24.33

TimeServer=10.161.224.1

NoUDPChecksums=0

ZeroFillBroadcast=0

AcceptClientAddr=0

UseUserAddr=1

UsePortAddr=0

UsePoolAddr=1

RIPInput=V2C

RIPOutput=V1

RIPIgnoreDefault=0

RIPIgnoreNetRoutes=0

RIPIgnoreHostRoutes=0

RIPOutputHostRoutes=0

RIPOutputNoDefault=0

DomainNameSuffix=sys.xxxx.se

RemoteAddressPool=10.161.224.120,8

DomainNameServerList=10.162.32.33

RIPHoldDown=120

RIPPassive=0

RIPOutputNoSplit=0

RIPOutputPoison=0

RIPAuthentication=0

[Netware]

Enabled=0

Autosense=0

[Bridge]

Enabled=1

ExternalRing=0x103

InternalRing=0xF01

BridgeNumber=0

LLCSAPTypes=0x00,0x02,0x04,0x05,0x08,0xE4,0xF0,0xF4,0xF5

[Serial\*: IP]

DialIn=1

DialOut=1

LanToLan=1

[Serial\*: IPX]

DialIn=1

DialOut=1

LanToLan=1

[Token\_Ring: IPX\_SNAP]

Enabled=0

Network=0x00000000

Locked=0

[Token\_Ring: IPX\_8022]

Enabled=1

Network=0x51010300

Locked=0

[DialIn]

Enabled=1

Timeout=0

VirtualConnections=1

VirtualConnectionTimeout=120

[DialOut]

Enabled=1

Timeout=0

[LanToLan]

Originate=1

Answer=1

Timeout=0

VirtualConnections=1

VirtualConnectionTimeout=120

VirtualResumeIntervalEnabled=0

VirtualConnectionResumeInterval=30

VirtualConnectionResumeState=0

[Shell]

Enabled=1

Timeout=60

[Log]

InternalPrio=8

ExternalPrio=1

[SNMP]

sysName="IBM 8235 XXXX Produktion"

sysLocation="Maskinhall 4-5 H03"

sysContact="Central Teknik DB/DC 08-614 9612"

TrapHostAddrType=IP

TrapHostAddr=193.234.187.250

TrustedHostAddrType=None

CommunityName=public

CommunityAccess=read-only

CommunityName2=private

CommunityAccess2=read-only  
CommunityName3=admin  
CommunityAccess3=configure  
CommunityName4=proxy  
CommunityAccess4=read-only

[DHCP]

Enabled=0  
LeaseTime=2  
ReconnectAndNoShareNames=0

[PPP]

Compression=1  
Multilink=1  
MultilinkFragmentSize=30  
MultilinkFragment=0

[Security]

ShivaServerEnabled=0  
SecureKeyType=None  
AdminPass=TBppquo7EtvnK9QBEZjpgmGS1S  
DefaultType=TacacsPlus  
TACACSPlusServer=10.161.224.32,49,5328DORP  
CaseSensitive=0  
MinPasswordLength=0

[SecurID]

Enabled=0  
DES=1  
MasterPort=0  
SlavePort=0

[DigitalPathways]

Enabled=0  
Protocol=IPX  
AgentID=IBM8235  
AgentKey=0x0000000000000000

[Accounting]

LogAccounting=0  
RADIUSAccounting=0  
RADIUSAcctServerRetryCount=3  
RADIUSAcctServerRetryInterval=10

[Accelerators]

PowerburstEnabled=0  
PowerburstRequestMax=16  
PowerburstBuffersMax=64

[Dialin: IPX]

Network=0xFF0F0100  
Locked=0  
XXXXForward=0

[Serial1]

Sync=0  
ModemName="\*\* Default Settings \*\*"  
AnswerInit=AT&F1!T9E0S0=1  
Flow=HW  
Rate=115200  
InitString=AT&F1!T9E0S0=1

[Serial2]  
Sync=0  
ModemName="\*\* Default Settings \*\*"  
AnswerInit=AT&F1!T9E0S0=1  
Flow=HW  
Rate=115200  
InitString=AT&F1!T9E0S0=1

[Serial3]  
Sync=0  
ModemName="\*\* Default Settings \*\*"  
AnswerInit=AT&F1!T9E0S0=1  
Flow=HW  
Rate=115200  
InitString=AT&F1!T9E0S0=1

[Serial4]  
Sync=0  
ModemName="\*\* Default Settings \*\*"  
AnswerInit=AT&F1!T9E0S0=1  
Flow=HW  
Rate=115200  
InitString=AT&F1!T9E0S0=1

[Serial5]  
Sync=0  
ModemName="\*\* Default Settings \*\*"  
AnswerInit=AT&F1!T9E0S0=1  
Flow=HW  
Rate=115200  
InitString=AT&F1!T9E0S0=1

[Serial6]  
Sync=0  
ModemName="\*\* Default Settings \*\*"  
AnswerInit=AT&F1!T9E0S0=1  
Flow=HW  
Rate=115200  
InitString=AT&F1!T9E0S0=1

[Serial7]  
Sync=0  
Name=ISDN  
Flow=HW  
ModemName="\*\* Default Settings \*\*"  
Rate=115200  
AnswerInit=AT&FW2X4&C1&D3&K4%P5=1S0=1&W  
InitString=AT&FW2X4&C1&D3&K4%P5=1S0=1

[Serial8]  
Sync=0  
Name=Datalock  
ModemName="\*\* Null Modem \*\*"  
Flow=HW  
Rate=19200



DialPrefix=@

[Token\_Ring: IP]  
Address=10.161.224.9  
NetMask=255.255.255.0  
Broadcast=10.161.224.255

[NetBEUI]  
Enabled=1

---

### Interfaces Information

IBM8235 UTBYTT# show interfaces

Token\_Ring (interface 1) is up

input queue len = 1 (max was 41)

Hardware address 00-01-CB-62-DD-05

98310625 packets (2263450207 octets) in; 603108 packets (86817567 octets) out

IP address 10.161.224.9 mask 255.255.255.0 bcast 10.161.224.255

Source-Route Bridge, ring number 259

Serial1 (interface 2) is dormant

output queue len = 0 (max was 3)

74773 packets (4562274 octets) in; 80479 packets (29790637 octets) out

27 discards, 64 errors in; 0 discards, 0 errors out

Serial2 (interface 3) is up

input queue len = 0 (max was 6)

output queue len = 0 (max was 3)

92084 packets (5681748 octets) in; 94582 packets (29185805 octets) out

0 discards, 20 errors in; 0 discards, 0 errors out

Running PPP

PPP Stacker LZS (8 bit seq) (inline) decompress ratio 1:1.73

PPP Stacker LZS (8 bit seq) (inline) compress ratio 1.36:1

105 packets not compressed (0 due to MTU)

IP address 10.161.224.9 dest 10.161.224.125 bcast 10.161.224.255

Serial3 (interface 4) is dormant

output queue len = 0 (max was 3)

104857 packets (6192955 octets) in; 151882 packets (60246817 octets) out

21 discards, 365 errors in; 0 discards, 0 errors out

Serial4 (interface 5) is dormant

output queue len = 0 (max was 3)

96870 packets (18833379 octets) in; 102009 packets (26552518 octets) out

3796 discards, 47 errors in; 0 discards, 0 errors out

Serial5 (interface 6) is dormant

output queue len = 0 (max was 3)

82131 packets (8709832 octets) in; 83579 packets (31894033 octets) out

21 discards, 105 errors in; 0 discards, 0 errors out

Serial6 (interface 7) is dormant

output queue len = 0 (max was 3)

111232 packets (8826261 octets) in; 138500 packets (46640927 octets) out

42 discards, 69 errors in; 0 discards, 0 errors out

Serial7 (interface 8) is dormant

output queue len = 0 (max was 3)

12769 packets (1335253 octets) in; 13789 packets (4438734 octets) out

0 discards, 8 errors in; 0 discards, 0 errors out

Serial8 (interface 9) is dormant

0 packets (0 octets) in; 0 packets (0 octets) out

0 discards, 0 errors in; 0 discards, 0 errors out

Loopback (interface 10) is up

input queue len = 0 (max was 0)

0 packets (0 octets) in; 0 packets (0 octets) out

VToken1 (interface 11) is up

23168 packets (2730250 octets) in; 89950285 packets (1405599353 octets) out  
Source-Route Bridge, ring number 3841  
VToken2 (interface 12) is up  
89950314 packets (1405602867 octets) in; 23168 packets (2730250 octets) out  
LAN Bridge

---

### IP Information

IBM8235 UTBYTT# show ip ?

dhcp DHCP information  
host <hostname> Translate IP name to address  
policy IP address assignment policy  
pool IP dialin address pool  
route IP routes  
traffic IP stats

IBM8235 UTBYTT# show ip dhcp

DHCP is DISABLED

IBM8235 UTBYTT# show ip policy

IP address assignment policy --

Accept client addresses: OFF

Use user addresses: ON

Use pool addresses: ON

DHCP: OFF

IBM8235 UTBYTT# show ip pool

IP: Remote address pool, 1 address used out of 8

Address	State	Time when Available(sec)
10.161.224.120	idle	
10.161.224.121	idle	
10.161.224.122	idle	
10.161.224.123	idle	
10.161.224.124	idle	
10.161.224.125	active	
10.161.224.126	idle	
10.161.224.127	idle	

IBM8235 UTBYTT# show ip route

RIP table: 2 entries @ 248 bytes

Codes: C - connected, R - RIP, S - static, I - ICMP

Code	Net	Metric	Next Hop	TTL	Interface
S	0.0.0.0/0	0	10.161.224.1	0	Token_Ring
C	10.161.224.125/32	0	directly connected	0	Serial2:PPP
C	10.161.224.0/24	0	directly connected	0	Token_Ring

IBM8235 UTBYTT# show ip traffic

IP:

4133907 total datagrams received

18 datagrams with header errors

1046139 datagrams forwarded

504150 datagrams with unknown protocol

1676683 datagrams delivered

57940 output datagram requests

UDP:

41196 total datagrams received  
1620909 datagrams to invalid port  
45244 output datagram requests

TCP:

782 active opens  
1 passive open  
3917 segments received  
5530 segments sent

ICMP:

10661 total messages received  
312 messages dropped due to errors  
7166 output message requests

DNS:

---

**Lan-to-lan Information**

IBM8235 UTBYTT# show lan-to-lan  
No Networks are active

---

**Lines Infoamtion**

IBM8235 UTBYTT# show lines

Async Lines:

Line	State	Rate/P/Stop/	RA	DCD	DSR	DTR	RTS	CTS	Fr errs	Overruns	PErrs
1	CHAR	115200/N/ 1/	ON	ON	on	on	ON	10		0	0
2	NET	115200/N/ 1/	ON	ON	on	on	ON	11		2	0
3	IDLE	115200/N/ 1/	OFF	OFF	on	on	ON	9		1	0
4	IDLE	115200/N/ 1/	OFF	OFF	on	on	ON	29		2	0
5	IDLE	115200/N/ 1/	OFF	OFF	on	on	ON	3		0	0
6	IDLE	115200/N/ 1/	OFF	OFF	on	on	ON	73		2	0
7	IDLE	115200/N/ 1/	OFF	ON	on	on	ON	0		0	0
8	IDLE	19200/N/ 1/	ON	ON	on	on	ON	0		0	0

---

**Log Information**

IBM8235 UTBYTT# show log

```

Sun Jun 4 14:09:19 GMT 2000 47201 Serial6: New Dial-In session
+00:00 47202 Serial6:PPP: LCP layer up
+00:00 47203 Serial6:PPP: Received PPP ID packet: MSRASV4.00
+00:00 47204 Serial6:PPP: Received PPP ID packet: MSRAS-1-IBN28997
+00:35 47205 Serial6: "n262400" logged in
+00:01 47206 Serial6:PPP: Received PPP Protocol Reject for XXXXFCP (803F)
+00:00 47207 Serial6:PPP: Received PPP Protocol Reject for XXXXCP (CFEC)
+00:00 47208 Serial6:PPP: IP address 10.161.224.9 dest 10.161.224.120 bcast
10.161.224.255
+00:00 47209 Serial6:PPP: IPCP layer up
+1:40:21 47210 Serial6:PPP: CD dropped on connection
+00:00 47211 Serial6:PPP: IPCP layer down
+00:00 47212 Serial6:PPP: LCP layer down
+00:00 47213 Serial6: "n262400" logged out: user exit after 1:40:58 (Dial-In PPP,IP)
+00:01 47214 Serial6: Rate 115200bps
+00:01 47215 Serial6: Modem string 'AT&F1!T9E0S0=1'
+00:00 47216 Serial6: Initialized modem
+1:15:25 47217 Serial4: New Command Shell session
+00:00 47218 Serial4: Start Tacacs Plus authentication
+00:09 47219 Serial4: CD has dropped.
+00:02 47220 Serial4: Rate 115200bps
+00:01 47221 Serial4: Modem string 'AT&F1!T9E0S0=1'
+00:01 47222 Serial4: Initialized modem

```

+3:03:53 47223 setting time of day from real-time clock to Sun Jun 4 20:09:49 GMT 2000  
+2:36:09 47224 Serial3: New Dial-In session  
+00:00 47225 Serial3:PPP: LCP layer up  
+00:12 47226 Serial3: "K030100" logged in  
+00:01 47227 Serial3:PPP: Received PPP Protocol Reject for XXXXFCP (803F)  
+00:00 47228 Serial3:PPP: Received PPP Protocol Reject for XXXXCP (CFEC)  
+00:00 47229 Serial3:PPP: CCP layer up  
+00:00 47230 Serial3:PPP: IP address 10.161.224.9 dest 10.161.224.121 bcast  
10.161.224.255  
+00:00 47231 Serial3:PPP: IPCP layer up  
+00:48 47232 Serial3: Receive FCS error, length 57, packet 00 02 00 8A 2D  
A2 0A 50 B8 0F 20 A5 10 60 42 04 01 00 06 A  
+00:04 47233 Serial3:PPP: CCP Stac LZS (12 bit seq) decomp seq error:  
expect 0, got 1  
+01:52 47234 Serial3: Receive FCS error, length 579, packet FF 03 00 2D 6F  
0D 80 B1 00 01 00 CA 44 C7 A7 DF C7 C9 CD 3B  
+00:01 47235 Serial3: Receive FCS error, length 742, packet FF 03 00 2D 7F  
0D 61 2A 00 01 00 B9 AF 91 7A 77 A4 AA 43 11  
+00:01 47236 Serial3: Receive FCS error, length 277, packet FF 03 00 2D 7F  
0D 61 2A 00 01 00 B9 AF 91 7A 77 A4 AA 43 11  
+00:06 47237 Serial3: Receive FCS error, length 573, packet FF 03 00 2D 6F  
0D 3C 4F 00 01 00 20 38 BA 51 A8 85 B6 FD C3  
+00:01 47238 Serial3: Receive FCS error, length 744, packet FF 03 00 2D 7F  
0D 7C 7D 00 01 00 54 22 58 FC 38 9E B1 78 B3  
+00:01 47239 Serial3: Receive FCS error, length 291, packet FF 03 00 2D 7F  
0D 7C 7D 00 01 00 54 22 58 FC 38 9E B1 78 B3  
+00:15 47240 Serial3: Receive FCS error, length 443, packet FF 03 00 2D 7F  
0D DA 80 00 01 00 61 1D 6A 9C 84 D7 68 48 CB  
+00:00 47241 Serial3: Receive FCS error, length 305, packet D5 A0 DF 66 27  
E7 B6 17 BF 93 B2 EE 09 4D 30 C5 A2 F2 77 7E  
+00:00 47242 Serial3: Receive FCS error, length 443, packet FF 03 00 2D 7F  
0D DA 80 00 01 00 61 1D 6A 9C 84 D7 68 48 CB  
+00:08 47243 Serial3: Receive FCS error, length 853, packet FF 03 00 2D 6F  
0D 91 1D 00 01 00 A2 D0 FA 3B E4 36 2D 2C 86  
+00:00 47244 Serial3: Receive FCS error, length 749, packet 74 F6 E5 39 52  
8C 62 9E 71 F6 04 D1 51 2D 29 59 68 CC 14 3E  
+18:30 47245 Serial2: New Dial-In session  
+00:00 47246 Serial2:PPP: LCP layer up  
+00:02 47247 Serial2:PPP: LCP layer down  
+00:03 47248 Serial2: Rate 115200bps  
+00:04 47249 Serial2: Modem string 'AT&F1!T9E0S0=1'  
+00:00 47250 Serial2: Initialized modem  
+01:10 47251 Serial1: New Dial-In session  
+00:00 47252 Serial1:PPP: LCP layer up  
+00:02 47253 Serial1:PPP: LCP layer down  
+00:03 47254 Serial1: Rate 115200bps  
+00:03 47255 Serial1: Modem string 'AT&F1!T9E0S0=1'  
+00:01 47256 Serial1: Initialized modem  
+04:49 47257 Serial3:PPP: IPCP layer down  
+00:00 47258 Serial3:PPP: CCP layer down  
+00:00 47259 Serial3:PPP: LCP layer down  
+00:02 47260 Serial3: "K030100" logged out: user exit after 28:20  
(Dial-In PPP,IP)  
+00:01 47261 Serial3: Rate 115200bps  
+00:04 47262 Serial3: Modem string 'AT&F1!T9E0S0=1'  
+00:00 47263 Serial3: Initialized modem

+37:30 47264 Serial6: New Dial-In session

+00:00 47265 Serial6:PPP: Received PPP ID packet: IBM DIALs OS/2  
client driver version 4.5.3p2  
+00:06 47266 Serial6:PPP: LCP layer up  
+00:37 47267 Serial6: "n260750" logged in  
+00:00 47268 Serial6:PPP: CCP layer up  
+00:00 47269 Serial6:PPP: Received PPP Protocol Reject for XXXXFCP (803F)  
+00:01 47270 Serial6:PPP: Received PPP Protocol Reject for XXXXCP (CFEC)  
+00:01 47271 Serial6:PPP: IP address 10.161.224.9 dest 10.161.224.122 bcast  
10.161.224.255  
+00:00 47272 Serial6:PPP: IPCP layer up  
+10:19 47273 Serial6:PPP: IPCP layer down  
+00:00 47274 Serial6:PPP: CCP layer down  
+00:00 47275 Serial6:PPP: LCP layer down  
+00:02 47276 Serial6: "n260750" logged out: user exit after 11:07  
(Dial-In PPP,IP)  
+00:01 47277 Serial6: Rate 115200bps  
+00:04 47278 Serial6: Modem string 'AT&F1!T9E0S0=1'  
+00:01 47279 Serial6: Initialized modem  
+1:33:52 47280 Serial5: New Command Shell session  
+00:00 47281 Serial5: Start Tacacs Plus authentication  
+01:29 47282 Serial5: CD has dropped.  
+00:02 47283 Serial5: Rate 115200bps  
+00:01 47284 Serial5: Modem string 'AT&F1!T9E0S0=1'  
+00:01 47285 Serial5: Initialized modem  
+4:30:04 47286 Serial4: New Dial-In session  
+00:00 47287 Serial4:PPP: LCP layer up  
+00:39 47288 Serial4: "N086540" logged in  
+00:01 47289 Serial4:PPP: Rejecting packet (len 20) on protocol 802B: 01 01 00 14  
02 08 00 00 00 00  
+00:00 47290 Serial4:PPP: Received PPP Protocol Reject for CCP (80FD)  
+00:00 47291 Serial4:PPP: XXXXCP layer up  
+00:00 47292 Serial4:PPP: IP address 10.161.224.9 dest 10.161.224.123 bcast  
10.161.224.255  
+00:00 47293 Serial4:PPP: IPCP layer up  
+11:49 47294 Serial4:PPP: IPCP layer down  
+00:00 47295 Serial4:PPP: XXXXCP layer down  
+00:00 47296 Serial4:PPP: LCP layer down  
+00:02 47297 Serial4: "N086540" logged out: user exit after 12:32  
(Dial-In PPP,IP,XXXX)  
+00:01 47298 Serial4: Rate 115200bps  
+00:03 47299 Serial4: Modem string 'AT&F1!T9E0S0=1'  
+00:01 47300 Serial4: Initialized modem  
+6:28:43 47301 Serial3: New Dial-In session  
+00:00 47302 Serial3:PPP: Received PPP ID packet: IBM DIALs OS/2 client  
driver version 4.5.3p2  
+00:05 47303 Serial3:PPP: Out of sequence LCP NAK: expecting 9, got 8  
+00:00 47304 Serial3:PPP: LCP layer up  
+00:18 47305 Serial3: "p010100" logged in  
+00:00 47306 Serial3:PPP: CCP layer up  
+00:00 47307 Serial3:PPP: Received PPP Protocol Reject for XXXXFCP (803F)  
+00:00 47308 Serial3:PPP: Received PPP Protocol Reject for XXXXCP (CFEC)  
+00:02 47309 Serial3:PPP: IP address 10.161.224.9 dest 10.161.224.124 bcast  
10.161.224.255  
+00:00 47310 Serial3:PPP: IPCP layer up  
+03:38 47311 Serial3:PPP: CD dropped on connection  
+00:00 47312 Serial3:PPP: IPCP layer down



+00:00 47313 Serial3:PPP: CCP layer down

+00:00 47314 Serial3:PPP: LCP layer down  
+00:00 47315 Serial3: "p010100" logged out: user exit after 04:04  
(Dial-In PPP,IP)  
+00:01 47316 Serial3: Rate 115200bps  
+00:01 47317 Serial3: Modem string 'AT&F1!T9E0S0=1'  
+00:00 47318 Serial3: Initialized modem  
+02:34 47319 Serial2: New Dial-In session  
+00:00 47320 Serial2:PPP: Received PPP ID packet: IBM DIALs OS/2 client  
driver version 4.5.3p2  
+00:01 47321 Serial2:PPP: LCP layer up  
+00:24 47322 Serial2: "p010100" logged in  
+00:00 47323 Serial2:PPP: CCP layer up  
+00:00 47324 Serial2:PPP: Received PPP Protocol Reject for XXXXFCP (803F)  
+00:00 47325 Serial2:PPP: Received PPP Protocol Reject for XXXXCPC (CFEC)  
+00:02 47326 Serial2:PPP: IP address 10.161.224.9 dest 10.161.224.125  
bcast 10.161.224.255  
+00:00 47327 Serial2:PPP: IPCP layer up  
+30:02 47328 Serial1: New Command Shell session  
+00:00 47329 Serial1: Start Tacacs Plus authentication  
+00:35 47330 Serial1: New Command Shell session  
+00:00 47331 Serial1: "root" logged in <----- guess who? ;)

---

### Modem Information

IBM8235 UTBYTT# show modem ?

information <number> Show internal modem/serial slot information  
sregisters <number> Show internal modem/serial slot S-registers  
status <number> Show internal modem/serial slot status

IBM8235 UTBYTT# show modem information

"Show Modem" valid only for IBM8235/PLUS units

IBM8235 UTBYTT# show modem sregisters

"Show Modem" valid only for IBM8235/PLUS units

IBM8235 UTBYTT# show modem status

"Show Modem" valid only for IBM8235/PLUS units

---

### Netbeui Information

IBM8235 UTBYTT# show netbeui ?

names List NetBeui names

IBM8235 UTBYTT# show netbeui names

name pif type

---

### Novell Information

IBM8235 UTBYTT# show novell ?  
route List Novell routes  
servers List Novell servers  
traffic List Novell statistics

IBM8235 UTBYTT# show novell route  
NetWare disabled

IBM8235 UTBYTT# show novell servers  
NetWare disabled

IBM8235 UTBYTT# show novell traffic  
NetWare disabled

---

### PPP Information

IBM8235 UTBYTT# show ppp  
PPP interface Serial2:PPP  
output queue len = 0 (max was 11)  
155 packets (11432 octets) in; 135 packets (116775 octets) out  
0 discards, 0 errors in; 0 discards, 0 errors out

IBM8235 UTBYTT# show process

Total: 64, used: 11, free: 53

pid	name	state	prio	stack range	stack length	sem	runtime
0	null	ready	0	2399ae0-2399ce1	80 / 516	-	23d13:14:46
7	Serial1 shel	curr	10	2612348-2614345	1104 / 8192	-	00:01
54	Serial	wait	10	2472b08-2473b05	60 / 4096	serial_clea	00:00
55	tcp_sftpd	wait	10	2471428-2472425	176 / 4096	tcprcv	00:00
56	tcp_hosed	wait	10	2470408-2471405	176 / 4096	tcprcv	00:00
57	tcp_telnetd	wait	10	246f3e8-24703e5	176 / 4096	tcprcv	00:00
58	router	ready	10	246b3c8-246f3c5	100 / 16384	-	1d7:21:48
59	snmp_daemon	wait	10	2466ce8-246ace5	80 / 16384	snmp_daemon	02:14
61	acct_timer	ready	10	24609dc-24619d9	88 / 4096	-	00:00
62	NetBEUI name	wait	10	23b0d2c-23b1d29	56 / 4096	netbeui_nam	00:00
63	netlogd	wait	20	23ab72c-23ac729	60 / 4096	netlog	00:02

---

### Processes Information

IBM8235 UTBYTT# show processes  
"Processes" valid only for IBM8235/PLUS units

---

## Security Information

IBM8235 UTBYTT# show security

[UserOptions]

PWAttempts=7

ARARoamingDelimiter=@

ExpireDays=0

GraceLogins=7

[Users]

bosspc1=/di/do/rt/ip=10.161.224.60/pwd=sWz00ToWfIojNt5zmJ84mZKsfZ/ml=2/t|  
ime=881153172

kompc1=/di/do/rt/ip=10.161.224.56/pwd=17s\*Jo51gevgctDvnEWVtkhqZ/ml=2/ti|  
me=864994322

kompc2=/di/do/rt/ip=10.161.224.57/pwd=Hqc98yxZIWYOmhG2oAKX28zjfE/ml=2/ti|  
me=876731632

kompc3=/di/do/rt/ip=10.161.224.58/pwd=Kc9ZhsN00t.Y8iVU5W9B0tcmDS/ml=2/ti|  
me=876731632

kompc5=/di/do/rt/ip=10.161.224.61/pwd=1MUulJ32yxxgc6Lgux4ZdTzRXS/ml=2/fa|  
il=4/time=884846634

NK=/di/do/rt/ml=2/time=853429256

P002450=/di/do/rt/ip=10.161.224.59/pwd=ET0OmDtybeM3nx9LrT7sneLcTE/ml=2/t|  
ime=909571506

p003150=/di/do/rt/pw/sh/tp/pwd=ET0OmDtTrnM3nx9LrTW.neLcTE/ml=2/time=9288|  
32400

---

## Semaphores Information

IBM8235 UTBYTT# show semaphores

Total: 95, used: 38, free: 57

Num	Count	Name
-----	-------	------

7:	3	tcpsnd
----	---	--------

8:	5	tcprcv
----	---	--------

10:	3	tcpsnd
-----	---	--------

11:	5	tcprcv
-----	---	--------

15:	3	tcpsnd
-----	---	--------

16:	5	tcprcv
-----	---	--------

17:	3	tcpsnd
-----	---	--------

18:	5	tcprcv
-----	---	--------

19:	3	tcpsnd
-----	---	--------

20:	5	tcprcv
-----	---	--------

34:	3	tcpsnd
-----	---	--------

35:	5	tcprcv
-----	---	--------

37:	3	tcpsnd
-----	---	--------

38:	5	tcprcv
-----	---	--------

48:	4	tcpsnd
-----	---	--------

49:	4	tcprcv
-----	---	--------

52:	3	tcpsnd
-----	---	--------

53:	5	tcprcv
-----	---	--------

58:	4	tcpsnd
-----	---	--------

59:	4	tcprcv
-----	---	--------

63:	0	ttyin
-----	---	-------

64:	1	ttyout
-----	---	--------

68:	3	tcpsnd
-----	---	--------

69:	5	tcprcv
-----	---	--------

78:	3	tcpsnd
-----	---	--------

79:	5	tcprcv
-----	---	--------

83: 0 tcpsnd  
84: -1 tcprcv  
85: 0 tcpsnd  
86: -1 tcprcv  
87: 0 tcpsnd  
88: -1 tcprcv  
89: -1 snmp\_daemon  
91: -1 serial\_clear  
92: -1 input  
93: -1 netbeui\_name\_sem  
94: -1 netlog  
95: 1 conf\_wsem

---

### Slot Information

IBM8235 UTBYTT# show slot ?

information <number>            Show internal modem/serial slot information  
sregisters <number>            Show internal modem/serial slot S-registers  
status <number>                Show internal modem/serial slot status

IBM8235 UTBYTT# show slot information

"Show Modem" valid only for IBM8235/PLUS units

IBM8235 UTBYTT# show slot sregisters

"Show Modem" valid only for IBM8235/PLUS units

IBM8235 UTBYTT# show slot status

"Show Modem" valid only for IBM8235/PLUS units

IBM8235 UTBYTT# show upload

Upload disabled

---

### Users information

IBM8235 UTBYTT# show users

Line	User	Activity	Idle/Limit	Up/Limit
1	root	shell	0/ 60	9/ None <-- vem kan det vara då..? :)
2	p010100	ppp	4/ None	40/ None <- läs längst ner för mer info.

Total users: 2

---

### Version Information

IBM8235 UTBYTT# show version

IMAGE version: IBM 8235-021/051, Version 4.5.4 97/02/28

VROM version: IBM 8235-021/051 VROM Version 5.8.3 97/02/28

Total memory: 2048K (2097152 bytes), 33 of 48 buffers free

Heap memory: 1291244 bytes (970736 free, 320508 used)

Configuration: 10528 bytes (712 bytes for 8 users)

Uptime: 24d20:40:29

Date: Mon Jun 5 13:36:44 GMT 2000

RTC date: Mon Jun 5 13:36:46 GMT 2000

Remote Boot: OFF

Image file SPX download

Domain Name Servers: 10.162.24.33, 10.162.32.33

UDP Time Server: 10.161.224.1

---

### Virtual-Connection Information

IBM8235 UTBYTT# show virtual-connections

Dialin Virtual Connections are enabled

LAN-to-LAN Virtual Connections are enabled

Connections suspended for 18 hours are cleared

LAN-to-LAN connections are not periodically resumed

LAN-to-LAN connections are not resumed on database changes

Dialin connections are suspended after 120 seconds

LAN-to-LAN connections are suspended after 120 seconds

-----

*Här visas en del kommandon som inte visas i helpavsnittet*

IBM8235 UTBYTT# run

Usage: run 'script'

---

Angående den där andra usern som var inloggad.. som ni ser så går det att skapa en ppp-session med den, men det kan ju vara lite riskfyllt om dom tittar i loggarna? men det verkar dom inte göra eftersom dom kör med deafult pass (vilket är ingenting, så när ni hittar en, prova det först)

Men skulle ni ta och starta en ppp-session så tycker jag inte att ni ska ta och sitta dygnet runt eftersom dom då lättare kommer på er, men sitter ni typ 1 timme per dag så ska det inte vara några problem skulle jag tro.

Satt på ett av Scans 020-dialup nummer förut ungefär 8 timmar per dag (satte på download när jag åkte till skolan), och då stängde dom bara av det efter 2 månader eller lite mer, fick dock inte polisen eller något sådant hem, dom tyckte nog kanske bara att det var pinsamt, men jag kan inte garantera att alla företag känner detsamma.

Jeje, Detta var nog en total genomgång av IBM8235-systemet, cya around i guess.