

# CAN YOU FEEL THE LOVE TONIGHT

(as performed by ELTON JOHN)

Music by ELTON JOHN  
Lyrics by TIM RICE

Pop Ballad

Bb



F/A



Eb/G



Bb/F



Eb



Bb/D



*mp legato*

With pedal

F/A



Bb



Cm7



Bb/D



Eb



Bb/D



There's a calm sur-render  
There's a time for ev-'ry-one,

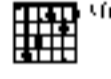
Eb



Bb/D



Eb



Bb/D



to the rush of day,  
if they on-ly learn  
when the heat of the roll-ing world  
that the twist-ing ka-lei-do-scope

Cm7



F/A



Eb



Bb/D



can be turned a-way,  
moves us all in turn.  
An en-chant-ed mo-ment,  
There's a rhyme and rea-son

E $\flat$

B $\flat$ /D

E $\flat$

Gm

and it sees me through. — It's e - nough for this rest - less war - rior  
to the wild out - doors — when the heart of this star - crossed voy - ag - er

A $\flat$

F

B $\flat$

F/A

just to be with you. — } And can you feel the love —  
beats in time with yours. — }

*poco cresc.*

Gm

E $\flat$

B $\flat$

E $\flat$

C/E

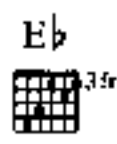
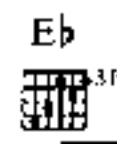
to - night? — It is where we are. —

F

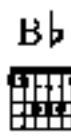
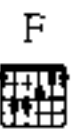
E $\flat$

B $\flat$ /D

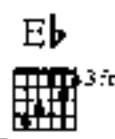
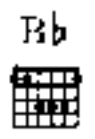
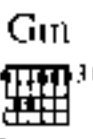
It's e - nough for this



wide eyed wan-der - er that we got this far.



And can you feel the love



to - night, how it's laid to rest?



It's e - nough to make

Gm Gm/F Eb Cm Bb/D Eb F7sus

kings and vag-a-bonds be-lieve the ver-y best.

Eb/Bb Bb F/A Eb/G Bb/F

*poco dim.*

Eb Bb/D F/A Bb Cm7 Bb/D 2 Eb Bb/D

It's e-nough to make

Gm Gm/F Eb Cm Bb/D Eb F7sus Eb/Bb Bb

kings and vag-a-bonds be-lieve the ver-y best.

*rall.* *molto rit.*