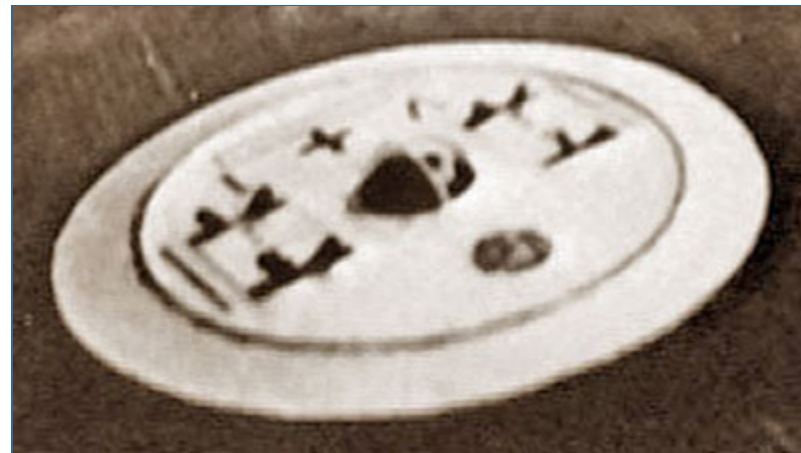


JFM
Jenseitsflugmaschine (Other World Flight Machine)
(1922-1924)

by Rob Arndt



"Germany's first disc"

In the summer of 1922 in a small barn outside of Munich the occult *Thule* and *Vril Gesellschafts* set about to create an *interdimensional flight machine* based upon channeled information received by their two mediums (**Maria Orsich** and **Sigrun**) from *Aldeberan* in the *Taurus Constellation*, 68 light years away.

Maria, the *Thule medium*, had been receiving information from what she believed was *Aryan aliens* living on *Aldeberan* since 1919 but could not translate their language and strange mental images.

Sigrun, the *Vril medium* was brought in to help translate these communications and images which was in the form of a strange circular flight machine with an even stranger cylindrical powerplant beyond all conventional science of the time.

Thule and *Vril* secretly called this craft the *Jenseitsflugmaschine*, or "*Other World Flight Machine*". The *Gesellschafts* then used their members in the German business community to raise funds for the construction of this machine under the code letters **J-F-M**.

By 1922, parts for the machine began arriving independently from various industrial sources paid in full by the *Thule* and *Vril Gesellschafts*.

The machine itself was a disc craft with three inner disc plates inside and a cylindrical power unit running through the center of all three plates. The central disc plate measured 8 meters in diameter; above it in parallel was a disc plate of 6.5 meters diameter and below an equally parallel disc of 7 meters diameter. Through the center of all three disc plates ran a 2.4 meter high cylindrical power unit that fit into a running 1.8 meter hole that culminated at the bottom of the disc body with a conical point to which was attached an enormous pendulum to stabilize the equipment once the unit was operating.

Once activated, the cylindrical power unit which consisted of an electric starter motor and high power generator started the upper and lower disc plates spinning in opposite directions to create a rotating electromagnetic field that was increasingly intensified. The intensity and frequency of the field oscillations increased in theory up to a point where an *interdimensional* oscillation occurred, opening a gateway or portal to another world. The *occultists* called this a "*white hole*" that theoretically would connect the *JFM* to *Aldeberan*'s corresponding frequency oscillations and navigate the machine through to that world. The sole purpose of this machine was to reach *Aldeberan* and make contact directly with those that had supplied the information through channeling.

Two years of research was done with the *JFM* until 1924 when the machine was hurriedly dismantled and moved to Augsburg where it eventually was placed in storage at *Messerschmitt*'s facility. With the end of the war, no trace was ever found of the *JFM*. Perhaps it was destroyed in an Allied bombing raid or simply taken apart by the Germans themselves out of fear. No one is certain.

But whether or not the *JFM* actually worked, one thing is certain: the *Thule* and *Vril Gesellschafts*, with the help of *W.O. Schumann* of the *Technical University of Munich*, developed some form of levitator unit from it that would be utilized in further German disc aircraft with the *RFZ (Rundflugzeug)* types starting in 1934 and ending with the fantastic *Vril* and *Haunebu* discs of 1939-1945.

[Return](#)