

~~TOP SECRET~~

Copy 9

6 Pages

K000017

NPIC/R-68/62

May 1962

APPROVED FOR  
RELEASE DATE:  
16-Jul-2011

PHOTOGRAPHIC INTERPRETATION REPORT

*g/110*

# ICBM LAUNCH COMPLEX DROVYANAYA, USSR



ARMY



NAVY



AIR FORCE



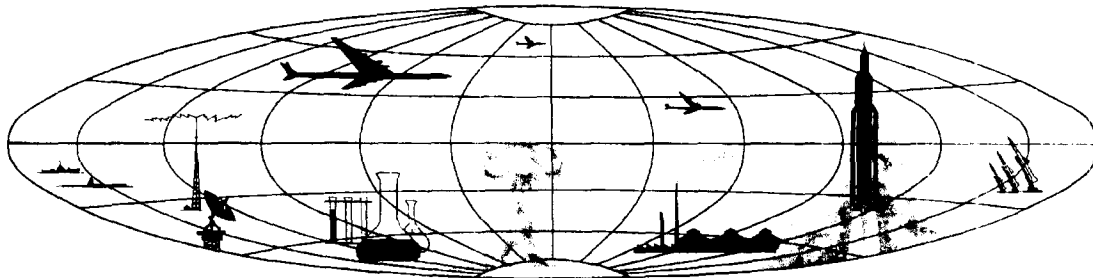
CIA

Handle Via **TALENT - KEYHOLE** Control Only

### WARNING

This document contains classified information affecting the national security of the United States within the meaning of the espionage laws U. S. Code Title 18, Sections 793 and 794. The law prohibits its transmission or the revelation of its contents in any manner to an unauthorized person, as well as its use in any manner prejudicial to the safety or interest of the United States or for the benefit of any foreign government to the detriment of the United States. It is to be seen only by U. S. personnel especially indoctrinated and authorized to receive TALENT-KEYHOLE information. Its security must be maintained in accordance with KEYHOLE and TALENT regulations.

NATIONAL PHOTOGRAPHIC INTERPRETATION CENTER



~~TOP SECRET~~

Declass Review NIMA/DoD

HR70-14

ICBM LAUNCH COMPLEX, DROVYANAYA, USSR

The Drovyanaya ICBM Launch Complex, initially identified on April 1962 KEYHOLE photography [redacted] and in the early stages of construction, is located approximately 4 nautical miles (nm) south of the town of Drovyanaya, USSR, and 36 nm south-southwest of Chita (Figure 1).

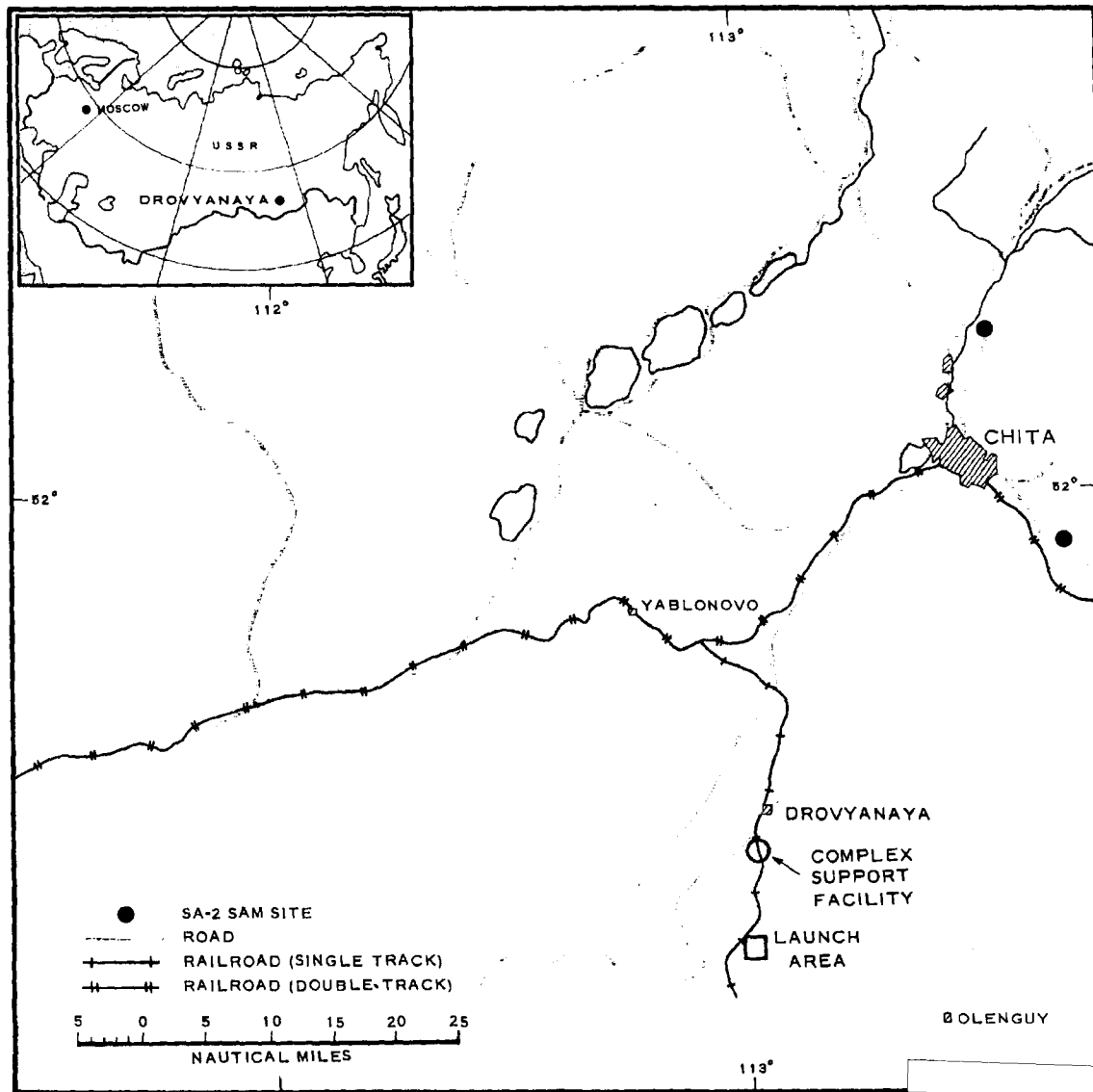


FIGURE 1. AREA ORIENTATION MAP.

NPIC/R-68/62

The principal components of the complex identified to date are a rail-served complex support facility and a road-served launch area, both under construction. The complex is situated 17 nm south of the Trans-Siberian Railroad and adjacent to a previously existing rail spur 30 nm long. That part of this spur south of Drovyanaya is probably abandoned and now used as a roadbed (Figure 2).

The general area was covered by KEYHOLE photography of [ ] September 1961 [ ] but there was no indication that construction was about to begin. However, a small secured facility, new in appearance,

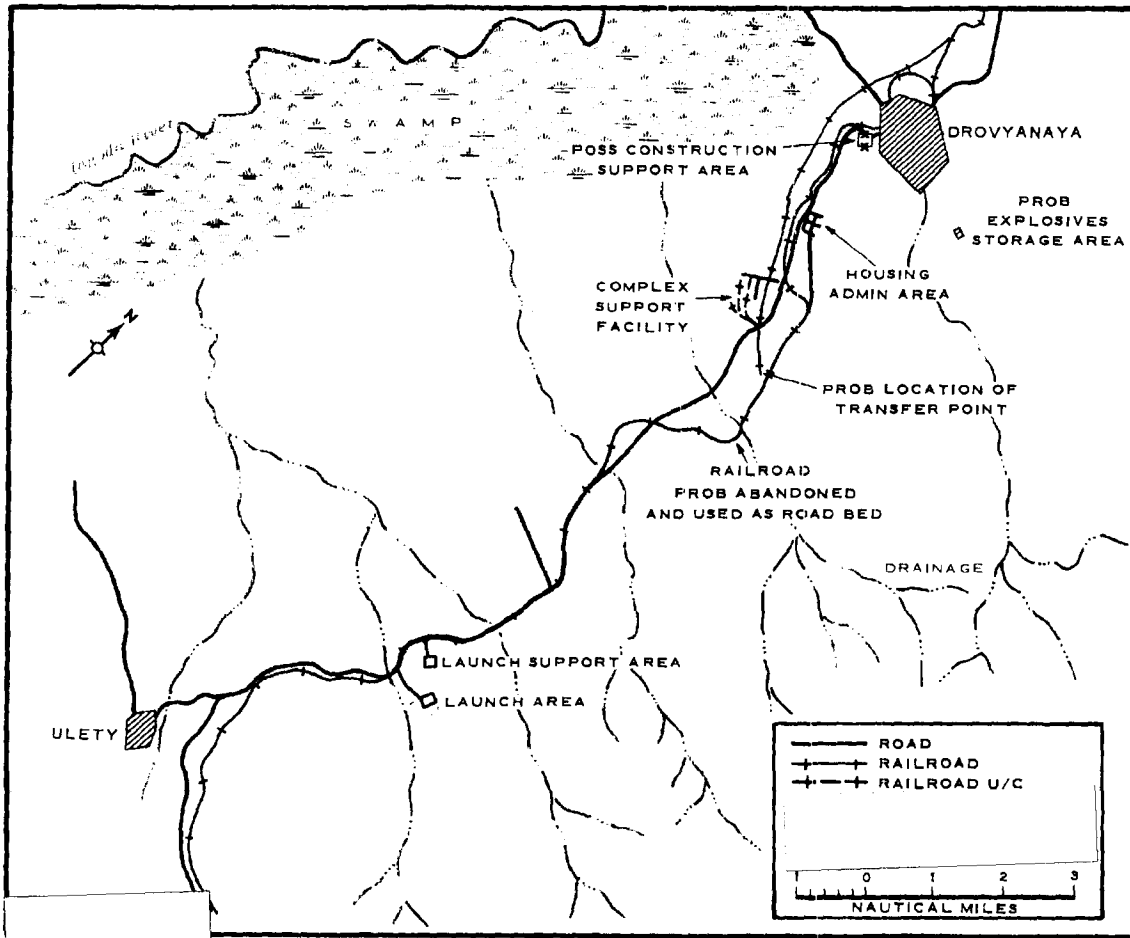


FIGURE 2. DROVYANAYA ICBM LAUNCH COMPLEX.

25X1

25X1

~~TOP SECRET RUFF~~

NPIC/R-68/62

was observed on the photography on the west edge of Drovyanaya. This facility, cloud covered on later missions, was possibly used for initial construction support. The area was covered again on [ ] March 1962 [ ] at which time construction was in progress but had not gone far enough to allow identification. Also, heavy haze and partial cloud cover hampered interpretation. SAM defenses in the area identified to date consist of two SA-2 launch sites, one north and one southeast of Chita. There is no evidence on the photography of additional launch areas. All roads and trails in the area other than those associated with the launch complex existed in September 1961 [ ]

#### Complex Support Facility

The Complex Support Facility is located at 51-32-00N 113-01-00E, 3.1 nm south of Drovyanaya. It is served by a rail spur, under construction, which leaves the old rail spur 1.6 nm north of Drovyanaya and extends south for 5.8 nm, generally paralleling the old spur. In March 1962, this spur extended to within 1.3 nm of the facility. The new spur passes by the east edge of the support facility and terminates south of it. Entrance to the facility by rail is only from the south. The set of multiple spurs serving the facility will number, when completed, at least two and possibly four spurs 3,200 feet long and 450 feet apart (Figure 3).

The shortest rail turning radius in the area appears to be about 600 feet, although the early stage of construction makes this difficult to determine. The only road access to the facility is provided by a road that connects with the old rail spur.

As of April, the support facility covered 425 acres and contained about 25-30 buildings. Paralleling the rail spurs are about seven buildings, the largest of which appears to be over 300 feet long. Some of the other buildings will be over 200 feet long when completed. There is no evidence of rail-through buildings. In the north portion of the facility, 15-20 barracks-

~~TOP SECRET RUFF~~

~~TOP SECRET RUFF~~

NPIC/R-68/62

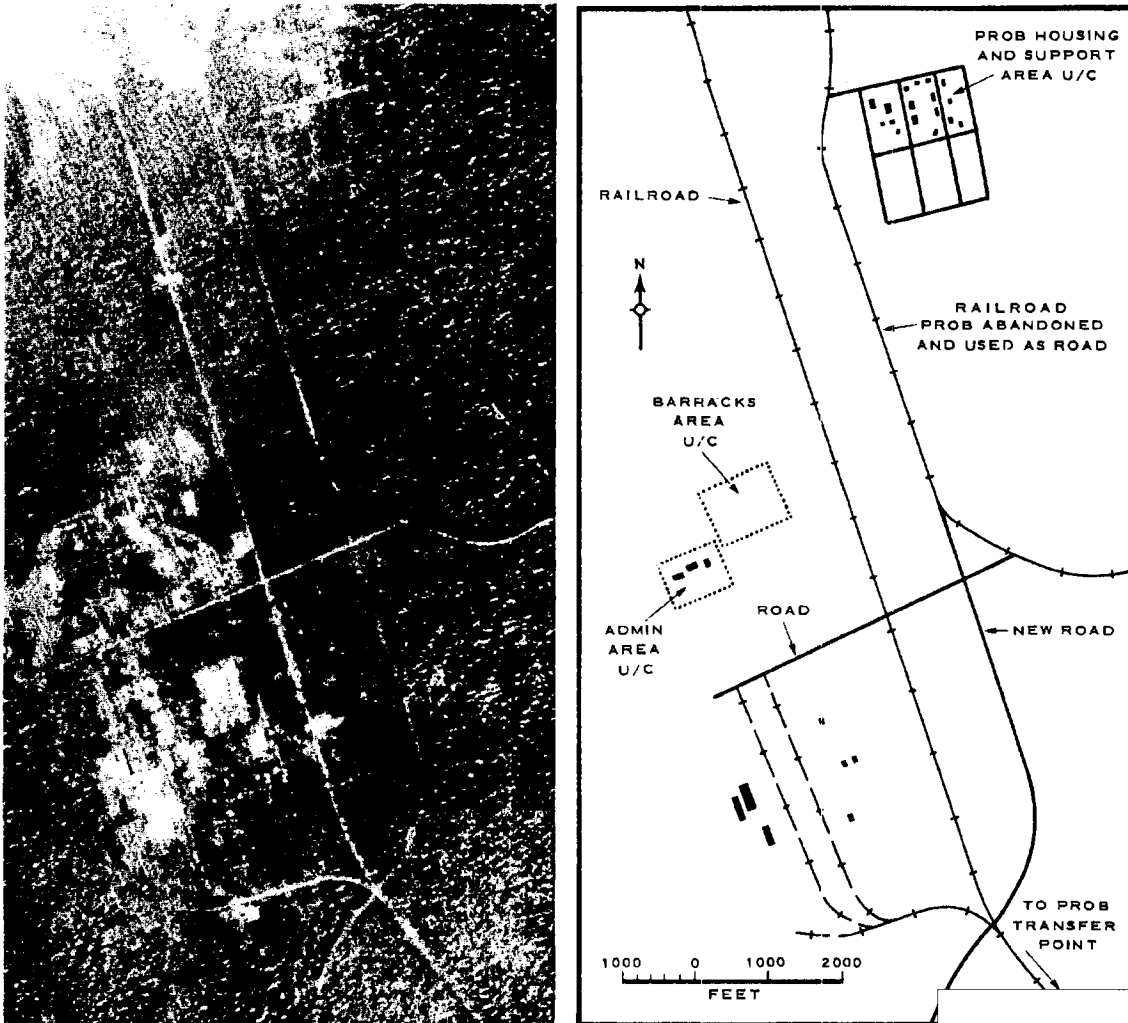


FIGURE 3. COMPLEX SUPPORT FACILITY (April 1962).

type buildings are under construction in a barracks area, and at least 3 buildings are visible in an administrative area which is under construction. A road-served probable housing and support area of 83 acres 1.1 nm northeast of the support facility is under construction. It consists of a grid pattern of clearings for roads and about 17 buildings.

The rail-to-road transfer point will probably be located near the end of the new rail spur, but the April coverage shows no indications of its existence.

- 4 -

~~TOP SECRET RUFF~~

25X1

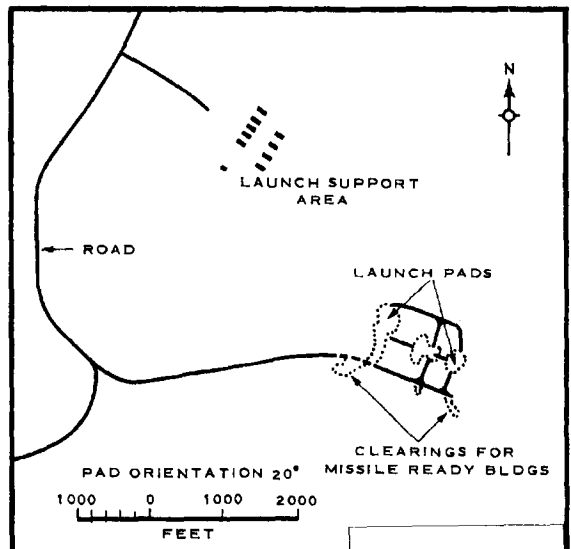
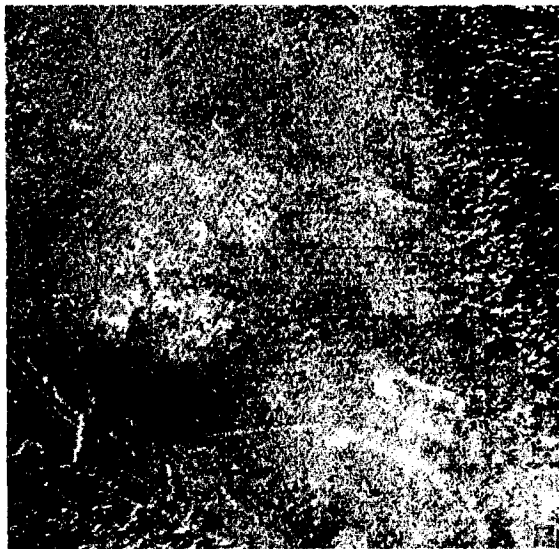
Launch Area

The Launch Area is located at 51-24-30N 113-00-30E, 9.5 nm (by road) south of the Complex Support Facility. It is served by a new, good road from the north



No evidence of fencing, water intake, or drainage is visible.

A launch support area is under construction 3,100 feet northwest of the Launch Area, north of a ridge between it and the pads. Construction is in progress on at least ten buildings, nine of which are nearly 200 feet long.



25X1

FIGURE 4. LAUNCH AREA (April 1962).

NPIC/R-68/62

REFERENCES

PHOTOGRAPHY

<u>Mission</u>	<u>Date</u>	<u>Pass</u>	<u>Camera</u>	<u>Frames</u>	<u>Classification</u>
	Apr 62				TOP SECRET RUFF
	Apr 62				TOP SECRET RUFF
	Mar 62				TOP SECRET RUFF
	Mar 62				TOP SECRET RUFF
	Sep 61				TOP SECRET RUFF

MAPS OR CHARTS

ACIC. US ATC Series 200, Sheet 0201-4A, 1st ed, Oct 59, scale 1:200,000 (SECRET)

REQUIREMENT

CIA. DDI/RR/E/R-38/62 (TOP SECRET RUFF)

Air. AFIC 62-23 (TOP SECRET RUFF)

NPIC PROJECT

JN-104/62