

# UMAX

## Astra MX3

### OWNER'S GUIDE

## TRADEMARKS

UMAX is a trademark of UMAX Technologies, Inc. Astra is a trademark of UMAX Technologies, Inc. IBM PC/AT is a trademark of International Business Machines Corporation. Macintosh is a registered trademark of Apple Computer, Inc. MS-Windows, and Windows, are trademarks of Microsoft Corporation. PageManager is a trademark of NewSoft Technology Corporation. Other names and trademarks appearing herein are trademarks of their respective holders.

## COPYRIGHT

©1999 UMAX Technologies, Inc. All rights reserved. No part of this publication may be reproduced, transmitted, transcribed, stored in a retrieval system, or translated into any language or computer language, in any form or by any means, electronic, mechanical, magnetic, optical, chemical, manual, or otherwise, without the prior written permission of UMAX Technologies, Inc.

# Table of Contents

## **CHAPTER 1. GETTING STARTED.....7**

Introduction.....7

Unpacking the Scanner.....8

    Package Contents .....8

Getting to Know Your Scanner.....9

    Astra MX3 Back Panel.....9

System Requirements .....10

Installing the Software.....10

    Installing Adobe Photoshop LE.....10

    Installing the VistaScan Software .....10

Installing the Hardware .....11

    About Scanner Connectors .....11

        USB Connectors .....11

        SCSI Connectors.....11

    Checking Your Computer’s Connectors .....12

    Positioning the Scanner.....12

    Connecting the Cables .....12

        Connecting the USB Cable.....12

        Connecting the SCSI Cable .....13

    Changing the SCSI Address.....13

    Connecting the optional UTC (Universal Transparency Cover) Cable.14

    Connecting the Power Adapter .....14

## **CHAPTER 2. SCANNING BASICS .....15**

Your First Scan.....15

    Make a scan with Adobe Photoshop LE.....15

Setting VistaScan Preferences .....16

    General.....16

        Color Matching/Correction .....16

        Show Ruler.....17

Tips Help .....	17
Scan Destination.....	17
File.....	17
Printer.....	19
E-mail.....	19
Fax.....	19
Application .....	20
Scanner Information .....	20
VistaScan Beginner Window Features .....	21
Performing the Preview Scan .....	21
Preview Tools .....	22
Zoom tool.....	22
Frame tool .....	22
Move tool.....	22
Selecting the Scan To Device or Application.....	23
Defining the Type of Image to Scan .....	23

## **CHAPTER 3. ADVANCED FEATURES.....25**

Making Advanced Window Changes .....	25
Changing the Original Document Source .....	25
Changing the Image Mode .....	26
Table 1. Resolution/File -Size Guidelines .....	28
Choosing the Best Resolution for Your Scanning Project .....	28
Table 2. Recommended Resolutions .....	28
Changing the Descreen Feature .....	29
Changing the Filter Setting.....	29
Changing the Scale Factor .....	30
Using the Auto Adjustment Feature .....	30
Using the Scan Control Unit.....	31
Selecting the Scan To Device or Application.....	31
Using the Multiple Scan Modes .....	32
Using the Color Adjustment Features .....	33
Adjusting Image Brightness, Contrast, Highlights and Shadows ..	33
Using the Brightness Bar.....	33
Using the Contrast Bar.....	34
Highlight Bar.....	34
Shadow Bar.....	34
Gamma Bar.....	34
Reset Button .....	34
Adjusting the Image Tones .....	34
Adjusting the Color Balance .....	35

Rotating/Inverting an Image .....	36
Using VistaAccess - Direct Access .....	37
Turning the Scanner Lamp On and Off.....	37
<b>CHAPTER 4. PUSH BUTTON SCANNING .....</b>	<b>39</b>
Configuring the Scanner Buttons .....	39
Setting the Scan Options .....	39
Configuring the Copy Button Values .....	40
Configuring the Custom Button Values .....	42
Using the Push Buttons .....	44
<b>CHAPTER 5. SCANNING PROJECTS.....</b>	<b>45</b>
Scan and Print Images with VistaScan.....	45
Scan a Photo to E-mail Using VistaScan.....	46
Converting Scanned Text to Editable Text with OmniPage.....	46
Opening OmniPage LE.....	46
Converting Scanned Text with OmniPage LE.....	47
Creating an Album with Presto! PhotoAlbum.....	47
Opening PhotoAlbum.....	47
Creating a Photo Album.....	48
<b>CHAPTER 6. HOW TO GET HELP .....</b>	<b>51</b>
Using Online Manuals .....	51
Accessing the Presto! PageManager Online Manual.....	51
Accessing the Caere OmniPage Online Manual .....	52
Installing Adobe Acrobat Reader 3.01 .....	52
Troubleshooting .....	52
General Problems and Solutions.....	52
Additional Troubleshooting Solutions .....	55
SCSI Problems and Solutions .....	55
Re-Install the Software .....	57
Contacting Technical Support.....	58

Maintenance .....59  
    Cleaning.....59

**APPENDIX A. TECHNICAL SPECIFICATIONS.....60**

**APPENDIX B. USING THE OPTIONAL UNIVERSAL  
TRANSPARENCY COVER (UTC).....61**

**FCC DECLARATION OF CONFORMITY .....62**

**WARRANTY.....64**

**INDEX.....65**

# Chapter 1. GETTING STARTED

## Introduction

Thank you for purchasing the UMAX Astra MX3 scanner. This versatile unit is perfect for the home or office. Use this scanner to add variety and flare to your documents, or to help you share images with others.

Before reading further, it's important to note that this scanner is a Macintosh<sup>®</sup> scanner. This manual is written for Macintosh users. The styling, functionality, and ease-of-use reflect the same attention to detail that you've come to expect from other Macintosh-compatible products. But your MX3 scanner will also operate on a PC running Windows<sup>®</sup> 95, 98 or NT. We mention this because there may be some people that want to use other operating systems with their scanner.

You'll note that there are a number of screenshots throughout the manual, and that many of them are from PC systems, as opposed to Macs. Where that's the case, the functions are identical. In other words, it works the same way on either Mac or PC systems.

But the MX3 is, without question, intended for Mac users. The software that is included with the scanner is specific to the Macintosh platform. There are PC versions of the driver software on the installation CD, but the application software is Macintosh compatible.

The Astra MX3 scanner is equipped with two SCSI connectors and a USB connector. Both the USB and SCSI interface connectors allow you to make a fast and easy connection to your computer. SCSI connectors are found on Macintosh computers and PC computers equipped with a SCSI interface card. USB connectors are found on newer PC computers and USB-equipped Macintosh computer (such as the iMac or blue and white G3).

In addition to being easy-to-connect, this scanner is also easy-to-use. Simply follow the instructions in this guide and you'll be scanning in no time. Use the powerful software included with your scanner to create, edit and archive scanned images, e-mail or fax images to friends or clients, or create your own web site gallery. Get ready to unleash your creativity with the UMAX Astra MX3 scanner.

# Unpacking the Scanner

Your scanner package includes the cables and software you need to get the scanner up and running. The scanner package should contain all of the items listed below. If you do not find all of the listed items, contact the retailer where you purchased the scanner, or contact UMAX. For information about contacting UMAX directly, refer to *Chapter 6. How to Get Help*.

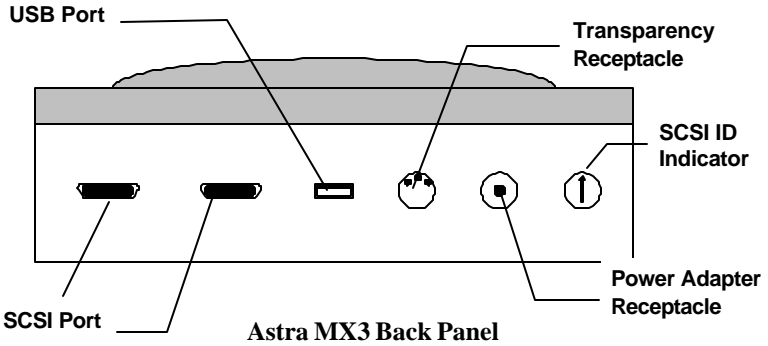
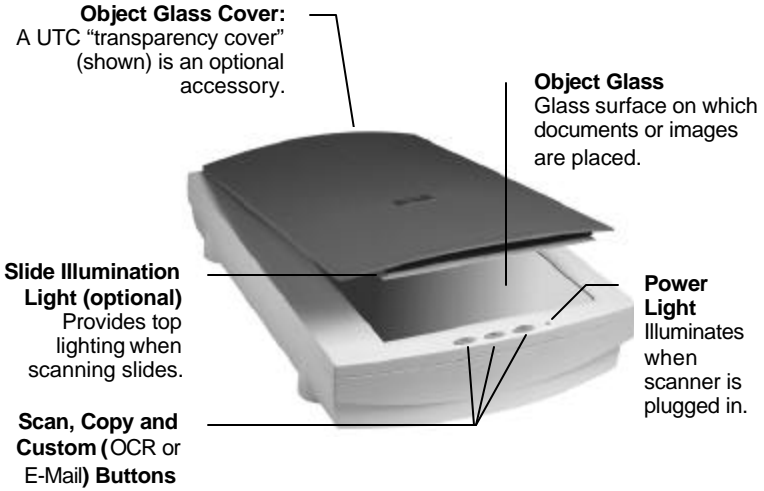
## Package Contents

- UMAX Astra MX3 Color Flatbed Scanner
- USB Interface Cable
- SCSI Interface Cable
- SCSI Terminator
- Owner's Manual
- Quick Start Guide
- Power Adapter
- Adobe® Photoshop® LE CD-ROM
- UMAX Scanner CD-ROM. This CD-ROM contains software for Caere® OmniPage® LE OCR, NewSoft® Presto! PageManager (full version).



## Getting to Know Your Scanner

The graphics below identify the key scanner components.



# System Requirements

- iMac or Macintosh® Power PC or higher
- USB or SCSI port
- 32 MB RAM memory
- Macintosh OS 8.1 or higher
- CD-ROM drive
- 170+ MB of available hard disk space

# Installing the Software

## Installing Adobe Photoshop LE

1. Disable any virus-protection extensions and restart your computer.
2. Insert the Adobe Photoshop LE CD-ROM into your CD-ROM drive. The Photoshop LE CD-ROM content window appears.
3. Double-click on the **Adobe Photoshop LE** icon. The Photoshop LE window appears.
4. Double-click on the **Install Photoshop LE** icon. Follow the screen prompts.
5. When the User Information dialog box appears, enter your personal information and the software serial number that appears in the upper right corner of the Photoshop registration card. You can find the registration card in the CD-ROM case.
6. Click on the on the **Install Now...** button.
7. Continue with the installation process by following the remaining screen prompts.

## Installing the VistaScan Software

The VistaScan CD contains all the software you need to operate your Astra MX3 scanner.

The CD contains:

- Presto! PageManager
- OmniPage Ltd. (including the Adobe Acrobat Reader installer)
- Presto! PhotoAlbum
- UMAX VistaScan

To install the software:

1. Place the VistaScan CD in the CD-ROM drive and double-click on the **VistaScan CD** icon.
2. Double-click on the **UMAX CD Installer** icon.
3. Follow the instructions to complete installation of the software.

## Additional Software

Please refer to the instructions that accompany the software for information on the installation and use of any additional software.

## Installing the Hardware

After you have removed the scanner from the box and verified that all of the package contents have been included, please check to make sure that your computer is compatible with the scanner's connectors.

## About Scanner Connectors

### **USB Connectors**

Newer computers (both PC and Macintosh) rely on USB technology as the primary method of communication between the computer and its peripherals. With this new USB "plug-and-play" technology your computer automatically configures peripherals.

### **SCSI Connectors**

Some Macintosh computers ship with built-in SCSI (Small Computer System Interface) connectors. SCSI connectors provide fast data transmission; additionally, they give you the ability to connect up to seven peripheral devices to your computer using just one SCSI port. PC computer users can install a SCSI interface card to provide SCSI support.

## Checking Your Computer's Connectors

To use your scanner you need to understand what type of connectors you have on your computer. To determine the connector type, look at the back panel of your computer:

- A USB port is a small slot ½" long and ¼" wide.



**Note:** If your computer has a USB port, check to make sure that your computer's operating system supports USB. The following factory-installed operating systems support USB: Mac OS 8.1, Microsoft Windows 95 OSR2, 98 or NT.

- A SCSI port is a 25-pin connector.



## Positioning the Scanner

Find a suitable location near your computer to place the scanner. Make sure the surface is flat.

**CAUTION:** Operating your scanner on an uneven surface can damage the internal components.

**Note:** Proper scanner hardware installation depends on installing the software first. If you have not installed the software that came bundled with the scanner, refer to the section *Installing the Software* earlier in this chapter for instructions.

## Connecting the Cables

### Connecting the USB Cable

If your Macintosh or PC computer has a USB port, follow these instructions to connect the scanner to your computer.

1. Locate the USB cable that is provided. Plug the rectangular end of the cable firmly into one of the USB ports. iMac computer ports are located on the right side of the computer. The USB port on other Macintosh

computers and PCs is located on the back panel of the computer, or on a USB interface card.

2. Plug the square connector end of this cable into the port located on the back panel of the scanner.

### Connecting the SCSI Cable

If your Macintosh computer has a SCSI port, follow these instructions to connect the scanner to your computer.

**Note:** If you do not already have your SCSI interface card installed in your computer, install it now. Refer to the installation instructions that came with the SCSI card.

1. Turn off the computer and the scanner.
2. Connect the SCSI cable to the SCSI port on the computer.
3. Attach the other end of the SCSI cable into the first SCSI connector on the backside of the scanner (closest to the left side).

**SCSI  
Connector  
Port**



**Note:** If your scanner is not chained to other SCSI devices, connect the Terminator to the remaining SCSI port of your scanner.

### Changing the SCSI Address

Changing the scanner's SCSI address is necessary if more than one peripheral is connected to the SCSI port and two or more of the peripherals have the same address or ID number.

To change the scanner's SCSI address:

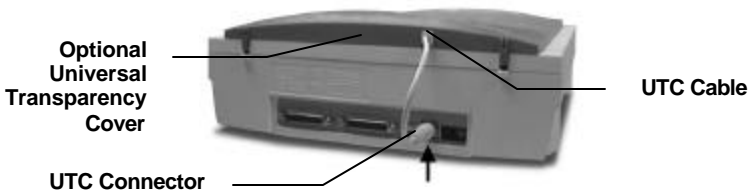
1. Check the other peripherals for their SCSI address or ID number. Your Astra MX3 SCSI address is preset to 5. If no other peripherals use 5 as a SCSI address or ID number, you are done. If another peripheral's address is 5, proceed to the next steps.
2. Unplug the scanner from its power source.
3. Gently turn the dial located at the back of the scanner, on the right-hand side, until an unused number appears.

**Note:** SCSI ID numbers 0 and 7 are used by the computer and by the hard drive. SCSI ID numbers 8 and 9 are settings for factory-use only and could cause damage to the scanner if used as a SCSI address for a peripheral.

## Connecting the optional UTC (Universal Transparency Cover) Cable

**Note:** The Universal Transparency Cover is available as an optional accessory. With the UTC, you'll be able to scan slides and other transmissive media.

1. Locate the UTC cable connected to the back end of the UTC cover.



2. Plug the UTC cable connector into the round three-pin DIN connector on the scanner's back panel.

## Connecting the Power Adapter

1. Plug the scanner's power adapter into an electrical outlet.
2. Insert the other end of this cable into the power adapter receptacle on the rear panel of the scanner. The power indicator on the front panel of the scanner should now be illuminated.
3. Turn your computer on.

## Chapter 2. SCANNING BASICS

VistaScan is the primary program or driver you use to scan with your Astra MX3 scanner. It is a TWAIN-compliant program, which means that it can be run from other programs that support scanning, such as Adobe Photoshop LE or OmniPage. It is also a stand-alone program, which allows you to scan images for a variety of uses, without launching another program first.

To open VistaScan as a stand alone program:

Double-click on the **VistaScan D.A.** application in the Umax VistaScan folder or click on the **VistaAccess scanner** icon on the Control Strip.

**Note:** Refer to *Chapter 4. Push Button Scanning* for more information on VistaAccess.

### Your First Scan

You can perform a basic scan using any of the software applications bundled with this scanner.

**Note:** Before you begin your first scan, you must install the scanner and the bundled software. Refer to *Chapter 1. Getting Started*, for installation instructions.

### Make a scan with Adobe Photoshop LE

1. Open Adobe Photoshop LE.
2. Choose **Import** from the File menu.
3. Select **UMAX VistaScan** from the drop down menu. The VistaScan program opens.
4. Place a photo to be scanned on the object glass.
5. Click on the **Preview** button.
6. Set the desired scan area by placing the cursor over the marquis lines that appear over the preview scan. When the cursor turns into a two-headed arrow, click and drag the marquis lines to frame the part of the image you want included in the final scan.
7. Click on the **Color Photo** button to scan the photo.
8. VistaScan closes and the scanned image appears in Photoshop.
9. Modify the image using the Photoshop tools.
10. Choose **Save As** from the File menu to save the scanned image.

# Setting VistaScan Preferences

Preferences control scanner settings that you generally do not modify every time you use the scanner. The Preference settings are used as the default settings for several of the scan settings.

To access the VistaScan Preferences:

Click on the **Preferences** icon in the upper right corner of the VistaScan window.

The Preferences cover three areas:

- General
- Scan Destination
- Scanner Information

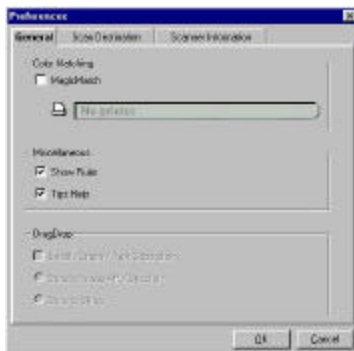
A tab at the top of the Preferences window indicates each VistaScan preference group. To view the Preference settings for an area, click on the associated tab.

## General

The General tab contains preference settings that control color matching and color correction, and whether to display the ruler and tips.

### Color Matching/Correction

Color Matching allows you to fine-tune the colors of scanned images so they match the colors of your original source documents as closely as possible. This is accomplished using MagicMatch.





Click on the **MagicMatch checkbox** (so a checkmark appears) to open the Profile List.

**Note:** The MagicMatch checkbox option is available only in advanced mode.

A profile contains calibration data for a specific printer, which MagicMatch uses to render a final output image. If a printer or calibration profile is not chosen, MagicMatch will calibrate the image to optimize its display on a monitor.

MagicMatch only functions when you are scanning in color mode. When you are using Magic Match, it automatically disables the Level/Curve and Color Adjustment/Balance settings in the VistaScan Advanced window.

### Show Ruler

The Show Ruler command displays or hides the rulers that border the top and left sides of the Preview window. These rulers correspond to the rulers on your scanner's object glass. Clicking on the **Show Ruler** checkbox turns off (removes the checkmark) and hides the ruler. Clicking on the checkbox again turns the feature on (displays a checkmark) and shows the ruler.

### Tips Help

The Tips Help option determines whether tips are displayed when you pause with your cursor over a VistaScan option. Click on the **Tips Help** box to enable tips (displays a checkmark). When a checkmark appears, clicking the checkbox disables the tips and removes the checkmark.

## Scan Destination

The options in this Preferences tab specify how scanned images are stored, printed, faxed, transferred to another application, or transmitted via e-mail.

Note: The Scan Destination tab is only available when VistaScan is opened as a stand-alone application.

### File

To designate the file type of a scanned image and create a place to store scanned images:

1. Click on the **File** icon. The file preferences appear to the right of the Scan To icon.



2. Click on the **pop-up menu** next to File Format and select one of the file types.

3. Click on the **Setting** button. Click on the **New** folder button. Type in the name of your new folder. Click **Create**.
4. Type the name of your scan in the field and click **Save**.

### Printer

To specify which printer to use when printing scanned images:

1. Click on the **Printer** icon. The printer currently selected as the default appears to the right of the Scan To icon set.



2. Click on the **Settings** button to open Page Setup. Make any changes you want, and then click **OK** to return to the Preference settings. If you want to make additional printer changes, click on the **Chooser** button to open up the Mac Chooser.

### E-mail

To specify which e-mail application to use when you e-mail scanned images:

1. Click on the **E-mail** icon. The e-mail preferences appear to the right of the Scan To icon set.



2. Click on the **pop-up menu** next to Image Type and select one of the file formats.
3. Click on the **Settings** button to open the dialogue box and select the E-mail program you want to use to send scans over the Internet.

### Fax

1. Click on the **Fax** icon. The fax driver (or printer driver if a fax driver is not selected) currently selected as the default appears to the right of the Scan To icon set.



2. Click on the **Settings** button to open Page Setup. Make any changes you want, and then click **OK** to return to the Preference settings. Click on the **Chooser** button to open the Mac Chooser.

### Application

1. Click on the **Application** icon to open application preferences.



2. To select an application, click on the **Settings** button to open the dialogue box and choose the application you want completed scans to open in. Click on the **Select** button to return to the preferences menu.
3. Click on the **pop-up menu** next to File Format and select one of the file formats.

### Scanner Information

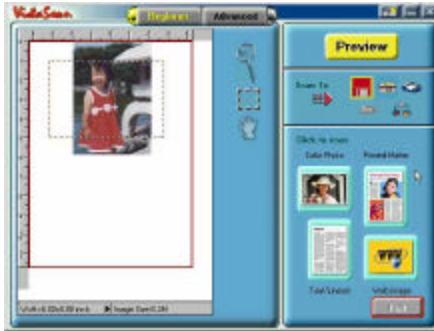
The Scanner Information tab displays important information about your scanner.

The information includes:

- Scanner Manufacturer
- Scanner Model
- Firmware Version
- VistaScan Version
- Maximum Scan Width and Length
- Maximum Resolution

## VistaScan Beginner Window Features

The VistaScan Beginner window appears when you launch VistaScan. The features of the VistaScan Beginner window let you scan a wide variety of documents, photos, and graphics. Just click a button.



Scanning an item via the Beginner window consists of just a few steps:

1. Perform a preview scan of the item to be scanned by clicking on the **Preview** button. The item is quickly scanned at low-resolution, and is displayed in the Preview window (on the left side of the VistaScan Beginner window).
2. Select what you want to do with the image after it is scanned using the Scan To icons.
3. Specify what kind of image you are going to scan, and start the final scan process using the Click To Scan icons.

### Performing the Preview Scan

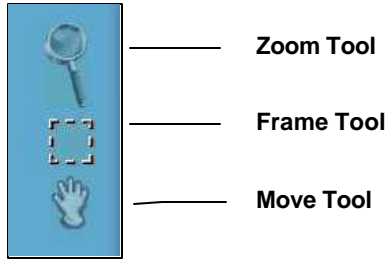
The Preview feature lets you scan an item at low-resolution so you can define the specific area to be scanned when you scan at higher resolution.

To preview the item you are going to scan:

1. Place the item you want to scan facedown on the object glass, under the inverted triangle that appears in the center of the rear ruler.
2. Click on the **Preview** button on the right side of the Beginner window. The image is quickly scanned and displayed in the Preview window.

## Preview Tools

There are three Preview tools in the VistaScan Beginner window.



### Zoom tool

Lets you enlarge or reduce the view of the image in the Preview window.

To use the Zoom tool:

1. Once the preview image appears in the Preview window, click on the **Magnifying Glass** icon.
2. Move your cursor into the Preview window and click. The image enlarges. To reduce the view size, press the **Command** key and click in the Preview window.

### Frame tool

Lets you select the portion of the image displayed in the Preview window you want scanned in the final step.

You can size the selection frame by clicking on the **Frame** tool and placing your cursor over one of the four edges of the frame (which changes the cursor shape to a two-headed arrow), drag the Frame inward to reduce the size, or outward to increase the size.

You can also move a selected frame by positioning the cursor inside the frame (which changes the cursor shape to a four-direction arrow), and dragging the frame to another location in the Preview window.

### Move tool

Lets you move an image in the Preview window so you can see portions that are not visible because the image is zoomed too large to display completely. Click on the **Move** tool. Put the cursor inside the Preview window (which changes the cursor shape to a hand). Scroll the image view by clicking and dragging the cursor.

## Selecting the Scan To Device or Application

To specify the device or application to which you want to send the scanned item, click on the icon that represents this device or application.

**Note:** The Scan To feature is available only when you open the stand alone VistaScan D.A. application.



The icons include:

**File** - Stores the scanned image in a file using the file name specified in the VistaScan Preferences.

**Print** - Prints the scanned item on the default printer.

**Fax** - Faxes the scanned item using your fax driver.

**Application** - Sends the scanned item to the application specified in the VistaScan Preferences.

**E-mail** - Sends the scanned item as a graphic file to your Microsoft Exchange or Lotus cc:Mail e-mail application.

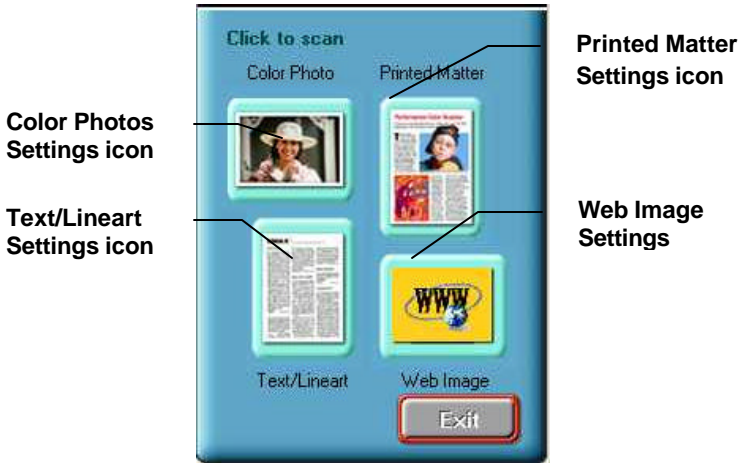
**Note:** Other e-mail applications are not supported.

## Defining the Type of Image to Scan

The Beginner window provides you with pre-defined scanning options so you can quickly and easily scan any of the following items:

- Color Photos - Scan color or black and white photos.
- Printed Matter - Scan something that has been printed like a brochure or magazine.
- Text/Lineart documents - Scan the text contained in a document, or to scan simple lineart graphics.
- Web Images - Scan graphics and then use them on the web.

To specify the type of image you are going to scan, click on the icon that represents the type of item you want to scan.



Clicking on any of these icons automatically starts the final scan process using the pre-defined scan settings. The scanned image is saved or sent to the device or application you specified by clicking on the Scan To icon.



## Chapter 3. ADVANCED FEATURES

The VistaScan Advanced window gives you the ability to adjust scanner settings individually for the type of document you are going to scan. If you are a novice computer user, you may want to use the VistaScan Beginner window until you are more familiar with VistaScan and the scanning process. The Beginner window options are preset to provide a quick and easy way to scan images.

To enter the Advanced window, click on the **VistaScan Advanced Button**.

The Advanced window contains the following tools and features you can use to scan documents:

- Original Document Source Settings
- Image Mode Settings
- Resolution Settings
- Descreen Settings
- Filter Settings
- Scaling Options
- Auto Adjustment Setting
- Scan Control Unit
- Multiple Scan Mode Settings
- Color Adjustment Feature Panel

### Making Advanced Window Changes

#### Changing the Original Document Source

The Original Document Source setting identifies the item you want to scan.



You can choose from the following settings:

- **Flatbed Reflective** - Scans paper originals (non-transparencies) e.g., photographs, documents, and brochures.
- **UTA (Transmissive) - Scans 4" x 5" or smaller photo transparencies.**
- **UTA (Negative)** - Scans 4" x 5" photographic negatives.

**Note:** For more information about scanning photo transparencies or negatives, refer to *Appendix B. Using the Universal Transparency Cover (UTC)*.

## Changing the Image Mode

VistaScan can scan a wide variety of image types.



**True Color, RGB** - Scans a full color photo or document. The RGB indicates the colors of Red, Green and Blue. This setting creates larger files than the B/W Photo setting.

**True Color 42-bit RGB** - Scans a full-color photo or document using 42-bits of information to define each pixel. The RGB indicates the colors of Red, Green and Blue. This setting creates larger file sizes than the True Color RGB setting.

**True Color, CMYK** - Converts RGB (video) color data into CMYK (printed) color data using a special color transformation process. When scanning is completed the CMYK image is ready for printing on a CMYK color printer.

**Note:** Most ink jet printers use RGB rather than CMYK printing.

**256 Colors** - Scans color images using 256 colors. The 256 color images take up less memory and hard disk space than the True Color RGB option.

**Web Color** - Scans an image at the appropriate resolution for display on the monitor.

**B/W Photo** - Scans black-and-white photos using 256 shades of gray (ranging from white to black) so you get smooth shade transitions in your scanned image.

**B/W Photo, 14-bit** - Scans a black-and-white photo using 14-bits of data to define each pixel. This setting produces more gray shade accuracy than the B/W Photo option, but also produces larger file sizes.

**B/W Document** - Scans text documents, black-and-white line art, and other black-and-white documents. This selection creates the smallest file sizes.

**FAX** - Scans at the appropriate resolution for faxing.

**OCR** - Scans at the appropriate settings for optimal OCR recognition.

**Note:** Not all graphic applications support 42-bit graphic files. To determine whether the software you want to use is capable of working with 42-bit graphics, refer to your software documentation.

#### Changing the Resolution Setting

Scanning resolution is measured in dots per inch (DPI). Resolution determines the amount of information the scanner will capture in a scanned image. The higher the resolution, the finer the image detail, and the larger the file sizes.

VistaScan lets you choose from the following resolution settings:

- 25-2400 dpi
- Higher - This option opens a pop-up menu that contains higher resolution settings from 3600-9600 dpi.
- Custom - This option opens a slider control where you can set any resolution up to 9600 dpi. Click and drag on the slider to change the setting and click on the **OK** button.

The following table gives you an idea of the file sizes you can expect based on the original image size and the resolution setting you specify. These values are based on scanning images in 24-bit, True Color RGB mode. Image sizes shown below are given in megabytes.

Table 1. Resolution/File-Size Guidelines

<b>Resolution (dots per inch)</b>	<b>Image Size 4x5</b>	<b>Image Size 5x7</b>	<b>Image Size 8.5x11</b>
72	0.30	0.53	1.39
100	0.58	1.00	2.68
200	2.29	4.01	10.70
300	5.15	9.01	24.10
400	9.16	16.00	42.80
600	20.60	36.10	96.30
800	36.60	64.10	171.20
1200	82.40	144.20	385.20

**NOTE:** Choosing the True Color RGB 42-bit setting captures more data than the 24-bit setting. This means that the file sizes listed above will be larger if you scanned images using the True Color 42-bit RGB setting.

### Choosing the Best Resolution for Your Scanning Project

To choose the best resolution for scanning, determine what you are going to do with the image once it is scanned. Matching your scanning resolution to the image use will give you the best image for that purpose and will keep the file sizes to the minimum needed.

Table 2. Recommended Resolutions

<b>Image Use</b>	<b>Recommended Resolution</b>
Printing	300 - 600*
Viewing on the Screen	72
Viewing on the Web	72
OCR, B/W	300
Pre-Press	600
Enlarging or reducing	600

\* Depending on the resolution of your printer

## Changing the Descreen Feature

The Descreen option helps eliminate the patterns that can appear when you scan printed images found in magazines, brochures, catalogues, etc. This is accomplished by changing the number of lines that appear in every inch (lines per inch) of the scanned image.

**Note:** The Descreen feature is unavailable when you have chosen the B/W Document, Fax or OCR resolution settings.

To change the Descreen setting:

1. Click on the **Descreen** option to display the pop-up menu.
2. Select one of the descreen options:
  - **No Descreen** - No Descreening.
  - **Magazine** - Specifies 133 lines per inch. This option smooths the fine dot pattern found in glossy magazines.
  - **Newspaper** - Specifies 85 lines per inch. Smooths the coarse grain pattern commonly found in newspaper images.
  - **Art print** - Specifies 175 lines per inch. Smooths the fine dot pattern found in high quality art prints.
  - **Custom** - This option opens a slider control where you can set any lpi from 50 to 400. Click and drag on the slider to change the setting and click on the **OK** button.

## Changing the Filter Setting

Image filters are used to soften or sharpen edges and boundaries of an image.

VistaScan provides the following filter options:

- **No Filter** - Use this option when you do not want to sharpen or blur the image.
- **Sharpen** - Sharpens lines that may be fuzzy or not clean in the original image.
- **Sharpen More** - Sharpens the image more than the standard Sharpen filter does.
- **Blur** - Softens the edges of an image.
- **Blur More** - Softens the edges more than the Blur filter does.

## Changing the Scale Factor

Scaling lets you automatically enlarge or reduce an image from its original size (100%) as it is scanned.

You can scale the image by selecting any of the scale factors listed below:

- 10%
- 25%
- 50%
- 100%
- 150%
- 200%
- Custom - Specify a custom scale setting by selecting the Custom option from the Scaling pop-up menu.

To define the custom scaling settings:

1. Choose the **Custom** option from the Scaling pop-up menu.
2. Drag the sliders to adjust the percentage of increase or decrease in scale.
  - The top slider is X and changes the scale of the scan vertically.
  - The bottom slider is Y and changes the scale of the scan horizontally.
  - To maintain proportions of the image during scaling, lock the sliders together by clicking on the X = Y box.
3. Click **OK**.

## Using the Auto Adjustment Feature

Auto Adjustment provides a simple way to adjust the light and dark values of a color or grayscale image you want to scan.

To automatically adjust the light and dark values:

1. Place the item you want to scan on the scanner object glass.
2. Click on the **Preview** button from the VistaScan Advanced window.
3. Select an area that you want to adjust using the **Frame** tool.
4. You can edit the **Preview image** before scanning the final image using the Zoom Tool and Frame Selection Tool. To find out more about how to use these tools, click on the **user tips** text that appears when your cursor pauses over the tool.

**Note:** To use VistaScan online help you must have a browser installed on the system.

- Click on the **Auto Adjustment** check box. The selected area is adjusted and the preview image refreshes, displaying the results you can expect when you perform the final scan.

## Using the Scan Control Unit

The Scan Control unit contains the Preview and Scan buttons, and the Scan To options.



### Selecting the Scan To Device or Application

To specify the device or application where you want to send the scanned item:

- Click on the **arrow** above the Scan To text on the Scan Control unit. The Scan Control unit panel slides back to display the Scan To icons.



- Click on the icon that represents the device or application where you want to send the scanned item.

The icons include:

- **File** - Stores the scanned image in a file using the file name specified in the VistaScan Preferences.
- **Print** - Prints the scanned item on the default printer.
- **Fax** - Faxes the scanned item using your fax driver.
- **Application** - Sends the scanned item to the applications specified in the VistaScan Preferences.
- **E-mail** - Sends the scanned item as a graphic file to your Microsoft Exchange or Lotus cc:Mail e-mail application.

## Using the Multiple Scan Modes

You can select multiple portions of the image scanned in Preview mode using the Multiple Frame tool.



To create more than one selection frame:

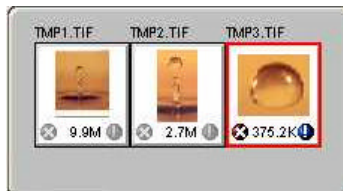
1. Scan an image in Preview scan mode and click on the **Multiple Frame** tool.
2. To select the area of the preview scan you want contained in the first frame, click on the **point** at which you want to begin the frame, and then drag the tool diagonally until the area of interest is contained in the marquis box.
3. Adjust the marquis box by holding the cursor over any edge of the box. When the two-headed arrow appears, drag the line to re-size the box.
4. Click outside of a selected area to save the frame. (The marquis box will turn into a green frame.) To create other frames, repeat steps 1, 2 and 3 until you have created all the desired frames.
5. Click on the **Job List** button to view thumbnails of your selections. If you want to re-crop one of the frames, double-click on its **thumbnail**. The green frame will revert to a marquis box and you can make adjustment. Click outside the frame when you are finished and the new image appears as a thumbnail in the job list.

To see information about any thumbnail:

Click on the "!" at the bottom of the thumbnail.

To remove a selected frame:

1. Click on the **Job List** button. Thumbnails of the selected frames appear in the job list window.





2. Click on the **thumbnail** of the frame you want to remove. A red box appears around the selected thumbnail.
3. Click on the **X** button, located in the bottom-left corner of the thumbnail, to remove the frame.

## Using the Color Adjustment Features

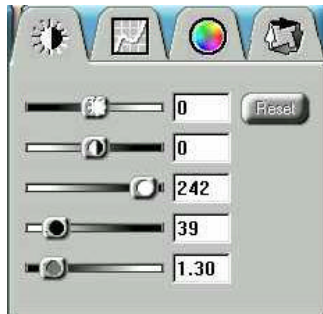
The Color Adjustment features allow you to make adjustments to the colors and/or tones in an image. The following lists the color adjustment settings you can modify:

- Brightness, contrast, highlights, shadows, and gamma
- Image tones
- Color balance
- Rotation/Invert

To access the color adjustment features, click on the **Color Adjustment** icon from the VistaScan Advanced window.

### Adjusting Image Brightness, Contrast, Highlights and Shadows

When you click on the **Brightness/Contrast** tab from the Color Adjustment panel a series of slider bars appear. Adjust the associated tones by dragging the slider in one of the bars to the left or the right.



### Using the Brightness Bar

Moving the slider on the scroll bar to the right increases the brightness.

Moving it to the left decreases the brightness. The default setting is zero 0. The maximum brightness setting is 100. The minimum setting is 100.

## Using the Contrast Bar

This setting controls the difference between light and dark areas in an image. Moving the slider on the scroll bar to the right decreases the gray shades between light and dark areas. Moving it to the left increases the gray shades between light and dark areas. The default setting is zero 0. The maximum contrast setting is 100. The minimum setting is -100.

## Highlight Bar

This setting defines the lightest (whitest) tones in the scanned image. If you broaden the range that includes the highlight points, the pixels within the newly specified range are remapped allowing you to see more details in a color/gray image.

Moving the slider on the scroll bar to the left increases the brightness. Moving it to the right decreases the brightness. The default setting is 255. The maximum highlight setting is 255; the minimum setting is 1 (white).

## Shadow Bar

The Shadow bar defines the darkest tones in the scanned image. Moving the slider on the scroll bar to the right decreases the brightness in shadowed areas. Moving it to the left increases the brightness in shadowed areas. The default setting is 0. The maximum shadow setting is 254 (black); the minimum setting is 0.

## Gamma Bar

The Gamma bar alters the mid-range gray tones in the scanned image. All optical devices, such as monitors and scanners, have some variation in their light sensitivity characteristics. To get a scanned image with good results, VistaScan provides gamma adjustment capabilities so you can compensate for this variation in your scanner.

Moving the slider on the scroll bar to the right increases the brightness of the mid-range gray tones. Moving it to the left decreases the brightness of the mid-range gray tones. The default setting is 1.5.

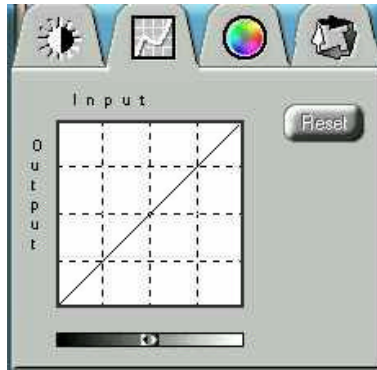
## Reset Button

Click on the **Reset** button to cancel any changes you made and return the values to the default setting.

## Adjusting the Image Tones

The Curve command is another way to make precise adjustments in the highlight, midtones, or shadow levels in your images. Using this feature

corrects the gray/color values in an image. You change the values by altering the shape of the curve that represents the brightness values of pixels.

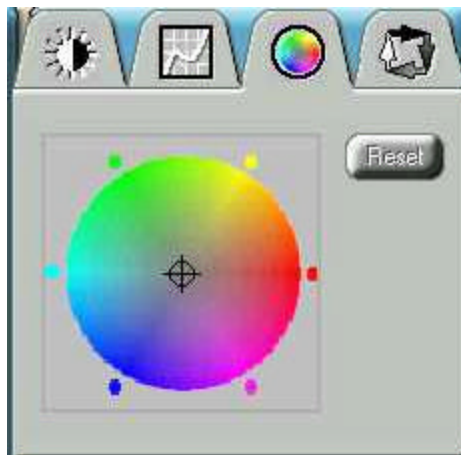


Click **Reset** to cancel the changes and return the value to the default setting.

### Adjusting the Color Balance

The Color Adjustment feature controls the hue and saturation of a particular color.

When you click on the **Color Balance** tab from the Color Adjustments panel, a continuous color spectrum wheel appears.

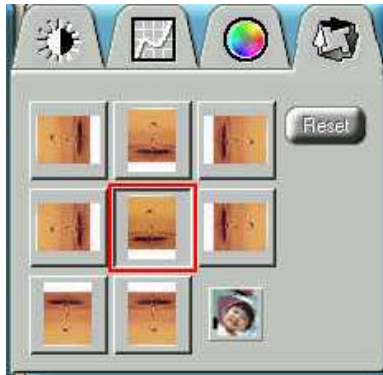


When you click in the wheel the image tones of the preview image are shifted to the particular hue that is represented in that area.

Click on the **Reset** button to cancel the changes and return the value to default setting.

## Rotating/Inverting an Image

You can rotate an image clockwise or counter clockwise, and you can flip images 180° vertically or horizontally.



The following lists the possible rotate and flip selections:

- Flip/Rotate Horizontally 90° clockwise
- Flip/Rotate Horizontally 90° counter clockwise
- Flip Horizontal
- Rotate 90° counter clockwise
- Rotate 90° Clockwise
- Normal - does not rotate or flip the image.
- Flip Vertical
- Rotate 180° clockwise
- Inverts an image - Changes all the dark tones in an image to light tones, and all of the light tones to dark tones. This option can NOT be reversed using the Edit menu Undo command.

Clicking on the image that shows the desired orientation rotates or flips the image. Click on the Reset button to cancel changes and return the image to the original orientation.

## Using VistaAccess - Direct Access

VistaAccess is a utility that provides instant access to several MX3 Scanner settings.

**Note:** You access VistaAccess from the Control Strip on your desktop. If you do not have the Control Strip feature installed on your Macintosh computer, you can install it from the Macintosh OS CD-ROM

To use VistaAccess:

Click on the **VistaScan** icon on the Control Strip. (It looks like a scanner.)

A pop-up menu will open with the following options:

- VistaScan - Loads the VistaScan D.A. software.
- Push Button Configuration - Use this to set your Astra MX3 buttons.

**Note** See more about Push Button Configuration in the section *Push Button Scanning* in Chapter 4.

- Lamp On/Off Control - Controls the scanner's lamp power saving utility. Refer to the section "Turning the Scanner Lamp On and OFF below.

Note: The lamp remains on whenever the scanner has power, unless you turn it off. See more in the section titled turning the Scanner Lamp On and Off.

- Find/Refresh Scanner - Re-initializes the scanner. If the VistaScan Icon has a red X over it, the scanner may be disconnected from a power source.

### Turning the Scanner Lamp On and Off

You can turn the scanner lamp on and off using the Astra MX3's built-in Power Saving utility. The lamp remains on whenever the scanner has power, unless you turn it off using the UMAX Power Saving utility.

To turn the lamp on or off on your Mac:

1. Click on the **VistaAccess Scanner** icon in the control strip and select Lamp On/Off Control from the pop-up menu.
2. Click on the **On** or **Off** button.

To turn the lamp on or off on your PC:

The Power Saving window appears at the bottom-right corner of your desktop by default when you close VistaScan.



To turn the scanner lamp off:

Click on the **image** of the scanner in the Power Saving utility window. After a second or two, the light in the scanner image goes out, and your scanner lamp is turned off.

To turn the scanner lamp on:

Open the VistaScan software, or simply click on the **scanner image** in the Power Saving utility window.

**Note:** The scanner lamp is different from the Power Indicator light. The Power Indicator light is the small, green light located on the front panel of the scanner. This indicator remains ON whenever the scanner is plugged into an electrical outlet (regardless of whether the Power Saving utility is engaged).

## Chapter 4. PUSH BUTTON SCANNING

The defining feature of the Astra MX3 is its push button functionality. You can scan an image to e-mail, perform OCR (optical character recognition), or even use the scanner as a copy machine by pushing one of the three buttons on the front panel of the scanner.

You can increase your productivity by accessing all of the normal scanner functions without having to launch the software applications through the onscreen interface.

Before you can use these time-saving functions, you need to configure the settings for each button. Follow the appropriate set of instructions below to configure the variables for each button.

### Configuring the Scanner Buttons

To open the Push Button Configuration software:

Click on the **VistaScan** icon on the Control Strip to open the pop-up menu and select **Push Button Configuration**.

There are three icons in the Button Configuration windows. Each icon represents a separate scanner button function. Clicking on the icon displays a window with options.

- Scan - Adjust the settings for the Scan button.
- Copy - Adjust the settings for the Copy button.
- Custom - Adjust the setting for OCR or E-mail when you press the Custom button.

Make changes to settings or choose different applications by clicking on the pop-up menu next to feature you want to change.

### Setting the Scan Options

These settings will be used whenever you press the **Scan** button on the front of the scanner.

1. Click on the **Scan** icon.
2. Select the image editing software. Choose one of the available applications. If the application you want to scan to does not appear in the Scan To pop-up menu, click on the **Add** button. When the dialog box

appears, navigate to the location of the application you want, select it and click on the **Open** button. The new application will be added to the Scan To menu. Default is Adobe Photoshop LE.

3. Choose the document type. Select **Color Photo**, **B/W Photo** or **B/W Document**. Default is Color Photo
4. Set the resolution. Select **72**, **150**, **300**, or **600** dpi. Default is 150 dpi.
5. Set the Brightness. Select from **Lightest** to **Darkest**. Default is normal brightness.
6. Select a Scan Source. This is the type of image. Select **Reflective** (prints or printed material) or **Transmissive** (transparencies). Default is Reflective.
7. Select the scan size. This is the size of the original to be scanned. Default is A4.

**Note:** Click on the **Default** button to return the values in each field to the default settings.

## Configuring the Copy Button Values

These settings will be used whenever you press the **Copy** button on the front of the scanner.

1. Click on the **Copy** icon.



2. Select a Print to option. Choose one of the available printers that is connected to your computer.
3. Select the type of image you are scanning by clicking on the arrow to the right of the Document Type field and choosing one of the available document types from the pop-up menu.





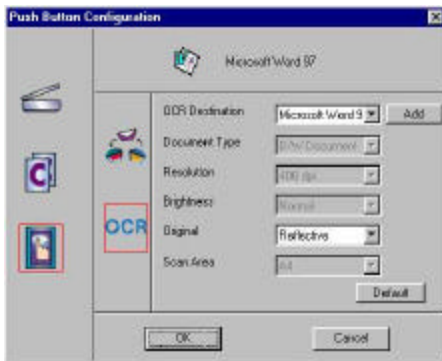
4. Select the desired resolution by clicking on the arrow to the right of the Resolution field and choosing one of resolution presets from the pull-down menu.
5. Select a scanning intensity level (brightness) by clicking on the arrow to the right of the Brightness field and choosing the desired brightness level from the pull-down menu.
6. Original indicates the type of material the original image is printed on. Select either Reflective or Transmissive by clicking the arrow to the right of the Original field.
7. Select the file size for the scanned image by clicking on the arrow to the right of the Scan Area field and choosing the desired dimensions from the pop-up menu.
8. Click on the **OK** button to save the Copy push button configuration settings. These settings will be used whenever you press the Copy button on the front of the scanner.

**Note:** You can also click on the Default button to return the values in each field to the default settings. Then click **OK** save these values for the copy button.

## Configuring the Custom Button Values

These settings will be used whenever you press the **Custom** button on the front of the scanner.

Click on the **Custom** icon to open Custom settings.



**Note:** The Custom icon controls the values for both the E-mail and OCR (optical character recognition) features. You configure the variables for each function separately.

To configure the Custom button for the E-mail function:

1. If the E-mail icon is not selected, (enclosed in a red box) click on the **E-mail** icon.



2. Select the e-mail application (only Microsoft Exchange and Lotus cc:Mail are supported) to send the scanned image to, by clicking on the arrow to the right of the Mail Destination field.
3. Select the type of image you are scanning by clicking on the arrow to the right of the Document Type field and choosing one of the available document types from the pull-down menu.
4. Select the desired resolution by clicking on the arrow to the right of the Resolution field and choosing one of resolution presets from the pull-down menu.
5. Select a scanning intensity level (brightness) by clicking on the arrow to the right of the Brightness field and choosing the desired brightness level from the pull-down menu.
6. Original indicates the type of material the original image is printed on. Select either Reflective or Transmissive by clicking the arrow to the right of the Original field.
7. Select the file size for the scanned image by clicking on the arrow to the right of the Scan Area field and choosing the desired dimensions from the pop-up menu.

8. Click on the **OK** button to save the Custom E-mail push button configuration settings. The Custom setting is now configured to scan and send the scanned image to the selected e-mail application.

**Note:** You can also click on the Default button to return the values in each field to the default settings. Then click **OK** save these values for the e-mail function of the Custom button.

To configure the Custom button to scan an OCR a document:

1. If the OCR icon is not selected (enclosed in a red box), click on the OCR icon.
2. Select the text editing application to use by clicking on the arrow to the right of the OCR Destination field. Choose an application from the pull-down menu.

**Note:** You do not need to select values for Document Type, Resolution, Brightness, nor for Scan Area.

3. Original indicates the type of material the original image is printed on. Select either Reflective or Transmissive by clicking the arrow to the right of the Original field.
4. Click on the **OK** button to save the Custom OCR push button configuration settings. The Custom setting is now configured to scan and send the editable text to the selected destination application.

**Note:** You can also click on the Default button to return the values in each field to the default settings. Then click **OK** save these values for the OCR function of the Custom button.

## Using the Push Buttons

Once you have configured the variables for each of the push buttons, you can scan images and text by simply pressing one of the buttons on your scanner.

To scan using one of the scanner's push buttons:

1. Press the Scan, Copy, or Custom (i.e. e-mail or OCR) button.
2. A Scan Progress window appears showing you the status of the scanning task.
3. When the scan is complete, the image you scanned appears in the application that you specified when you configured the button.

## Chapter 5. SCANNING PROJECTS

The UMAX Astra MX3 scanner includes bundled software to help you with a variety of tasks. This chapter shows you how to print a scan, scan a photo to e-mail, make a personalized calendar, create Web-ready images, and even turn a page of text into an online text document that you can edit.

### Scan and Print Images with VistaScan

1. To open the VistaScan software application, click on the **scanner** icon in the control strip located in the lower left corner of the Desktop. A pop-up menu appears. Select the VistaScan option from the menu.

Or:

Double-click on the **Hard Drive** icon. Double-click on the **UMAX VistaScan** folder. Double-click on the **UMAX VistaScan** application icon to launch VistaScan.

The VistaScan Beginner window appears.

2. Lift the scanner's document cover and place your document facedown in the center of the scanner's object glass.
3. Click on the **Preview** button to preview the scanned item. You can edit the Preview image before scanning the final image using the Zoom Tool and the Frame Selection Tool.

To find out more about how to use these tools, refer to the Preview Tools section or click on the **user tips** text that appears when your cursor pauses over the tool.

**Note:** The user tips feature is only available if you have a browser installed.

4. Click on the **Printer** icon in the "Scan to" options to indicate that you want to scan and print the image.
5. Click on one of the four icons in the Click To Scan area of the Beginner window. Your selection identifies the type of image you are about to scan and tells VistaScan how to set the scanner options for the best results. The image type selections include: Color photos, Text/lineart, Web Images and Printed Matter settings.

Once you click on the **desired image** type, the scanner starts scanning the image using the appropriate settings.

6. After the scan is complete, a print window appears. Verify that the destination settings are correct and then click on the **Print** button.

## Scan a Photo to E-mail Using VistaScan

Scanning an image to e-mail is similar to the procedure described in the *Scan and Print Images with VistaScan* section earlier in this guide. Follow steps 1 through 3 as listed in the Scan and Print instructions, and then proceed with the following steps:

1. In the Scan to options, click on the **E-mail** icon to set the scanner settings to the best values for scanning an image to e-mail.

**Note:** You may need to adjust the destination preferences in the VistaScan Beginner window. For information about setting preferences, refer to *Setting the VistaScan Preferences* section.

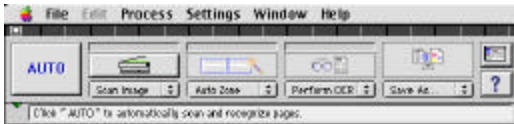
2. In the Click to Scan options of the Beginner window, click on the **Web Image** icon. The scanner starts scanning the image using the appropriate settings for web images.
3. After the image is scanned, a Microsoft Exchange or Lotus cc:Mail e-mail window appears with an icon representing the scanned image attachment.

**Note:** For more information about using Microsoft Exchange or Lotus cc:Mail refer to the user documentation that came with the application.

4. Fill out the rest of the standard e-mail information (address, subject, etc.) as you ordinarily would. Send the e-mail.

## Converting Scanned Text to Editable Text with OmniPage

OmniPage lets you scan an image that contains text and convert it to editable text so you do not have to retype the text.



### Opening OmniPage LE

1. Double-click on the **Hard Drive** icon.

2. Double-click on the **OmniPage Ltd. Ed** folder.
3. Double-click on the **OmniPage Limited Edition** application icon. An OmniPage toolbar appears. (If the toolbar does not appear, click on the **Window** pull down menu and select **Show Toolbar**).
4. Click **Select Scanner** from the Settings menu. Select **UMAX Astra Series** then click **OK**.

## Converting Scanned Text with OmniPage LE

1. Position the image you want to scan face-down on the scanner's object glass.
2. Click on the **Auto** button on the Toolbar to begin the scan.
3. Click **Save** to save the converted text. Give it file name and location in the Save dialogue box and click on the Save button.

OR

You can also save the scanned document to a specific word processing program. From the File pull down menu, select **Save as**. Click in the **Format** field and select the word processing program you want from the pop-up menu. Then click on the **Save** button.

4. Open your word processor application. Open the file that you just saved so you can review, edit, cut or copy portions of the text.

## Creating an Album with Presto! PhotoAlbum

A variety of templates you can use for albums are included in Presto! PhotoAlbum. You can also save an album you create and use it later as a template for creating another album. This process differs for PC and Macintosh users. When a step is different for PC or Macintosh users, a note gives platform-specific instructions.

### Opening PhotoAlbum

1. Double-click on the **Hard Drive** icon.
2. Double-click on the **Presto! PhotoAlbum** folder.
3. Double-click on the **Presto! PhotoAlbum** application icon. The PhotoAlbum window appears.

If you are opening Presto! PhotoAlbum on a PC:

1. Click on the **Start** bar in the bottom-left corner of the screen.
2. Select **Programs**.
3. Select **Presto! PhotoAlbum** from the Programs menu.
4. Select **Presto! PhotoAlbum**. The PhotoAlbum window appears.



## Creating a Photo Album

1. Click on the **Create** button, and then click on the **Template** button.
2. Choose an album template category by selecting one of the category icons in the column on the left.
3. Display the available template outlines by clicking on the template thumbnail. Browse through the template thumbnails using the scroll bar.

**Note:** Clicking on the thumbnail displays a description of the layout. The description includes information when the layout was originally created and how many pages are contained in the layout.

4. When you have chosen a template, click **OK**. After a moment the template appears.
5. Click on the **Command** icon in the upper-left corner of the floating Photo Browser window. If this window is not displayed, click on the **Photo Browser** button, located on the left side of the row of three icons on the bottom of the screen.
6. Choose **Select TWAIN Source** from the pull-down menu. Choose **VistaScan**, then click on the **Select** button.
7. Click on the Photo Browser window **Command** icon again, and then click **Acquire** to activate the scanner and launch VistaScan. The VistaScan Beginner window opens.
8. Lift the document cover and place the image you want to scan face-down in the center of the object glass of the scanner.
9. Click on the **Preview** button to perform a preliminary low-resolution scan of the photo you want to include in the album..



10. Specify the area to be scanned in the final scan using the VistaScan Frame Tool.
11. Click on the **Color Photos** icon in the Click to Scan area of the VistaScan Beginner window. The scanner performs the final, high-resolution scan.

**Note:** For PC Users: After the scan is complete, click on the **Exit** button.

12. A thumbnail of the image you just scanned appears in the Photo Browser window.
13. Click and drag this image into the spaces that read, "Put Photo Here!"
14. Repeat this process by scanning more photos and inserting them in the blank cell photo frames until you have filled the whole album.
15. Choose the **Save As** command from the Album menu. Enter the file name and directory location in which you want to store the album. Click **OK** to save the album.



## Chapter 6. HOW TO GET HELP

The Astra MX3 scanner has been designed to be reliable, easy-to-install, and easy-to-use. If you encounter any problems while installing or using your scanner, please follow the solutions outlined below.

- Consult the online manual
- Read the troubleshooting section below
- Contact UMAX directly

### Using Online Manuals

All bundled software comes with online help, which essentially is an online manual. Read the following information to find out how to access the manuals for each individual software application.

#### Accessing the UMAX VistaScan Online Manual

If the VistaScan application is already open, you can locate the manual by clicking on the “?” icon located in the upper right corner. If VistaScan is not open, follow the instructions below.

1. Double-click on the **Hard Drive** icon on the desktop.
2. Double-click on the **UMAX VistaScan** folder.
3. Double-click on the **VistaScan Help**. Your Internet browser should launch the *VistaScan User's Guide*.

#### Accessing the Presto! PageManager Online Manual

1. Double-click on the **Hard Drive** icon on the desktop.
2. Double-click on the **Presto! PageManager** folder.
3. Double-click **User's Guide.pdf**. (If you receive an error, please install Adobe Acrobat reader 3.01. See “Installing Acrobat Reader” below for instructions.)

## Accessing the Caere OmniPage Online Manual

1. Double-click on the **Hard Drive** icon on the desktop.
2. Double-click on the **OmniPage LE** folder.
3. Double-click **OmniPage Ltd.pdf**. (If you receive an error, please install Adobe Acrobat Reader 3.01. See *Installing Acrobat Reader* below for instructions.)

## Installing Adobe Acrobat Reader 3.01

To read some of the online manuals for the included software, you need to use Adobe Acrobat Reader. The Acrobat Reader Installer was installed on your hard drive when you installed OmniPage Ltd.

1. Double-click on the **Hard Drive** icon on the desktop.
2. Double-click on the **OmniPage Ltd. Ed.** folder.
3. Double-click on the **Acrobat Reader** installer icon.
4. Follow the directions to install Acrobat Reader on your hard drive.

## Troubleshooting

This scanner is designed to be reliable and easy to install. If you have any problems with your scanner, please read the notes that follow to find out probable causes of the problem.

### General Problems and Solutions

#### **Problem:**

The scanner lamp fails to light, flickers or dims.

#### **Solution:**

1. Check to ensure the power adapter is plugged in completely.
2. The scanning lamp is failing or has failed and needs to be changed. Please contact your dealer or UMAX Technical Support.

#### **Problem:**

The scanner test failed. The scanner test utility is a PC-based utility. Macintosh users will not encounter this problem.

#### **Solution:**

Make sure the interface cable is properly connected to the USB connector port on your computer. Find/refresh the scanner after reinserting the USB cable. Try the other USB port on the computer.

**Problem:**

When I daisy chain the scanner with other USB capable devices, I get a scanner error.

**Solution:**

Many Macintosh computers have at least two USB ports. We recommend that you connect your scanner directly to one of these ports. Daisy-chaining the scanner, or running the scanner through a hub can cause the signal to be lost before it is communicated to your computer.

To make the troubleshooting process easier, disconnect your scanner from other USB capable devices or hubs when troubleshooting.

**Problem:**

I cannot get the scanner to install properly, or it does not run once it is installed.

**Solution:**

If you are having problems installing or using the Astra MX3 scanner, ensure that Macintosh OS 8.0 or higher is installed on your computer.

**Problem:**

The system takes too long to scan.

**Solution:**

Disable virtual memory, reboot your computer with the extensions disabled (hold down the SHIFT key during re-boot) and try again. Booting with the shift key still loads the UMAX scanner extension required for scanning.

**Problem:**

Your system goes to the Finder when you try to acquire the scanner.

**Solution:**

Plug the scanner into its own power outlet. If still does the same thing, please call UMAX Technical Support.

**Problem:**

The following error message appeared: "Error: Not Enough Power to Function"

**Solution:**

The Macintosh OS generates this message if:

- A device draws too much power from the USB bus
- One or more devices plugged into a hub require more power than is available
- You attached a self-powered device (such as a printer or floppy drive) to your computer without plugging it into an electrical outlet.

Remove all other devices from the USB chain, so the scanner is the only device on the USB chain. Make sure that the scanner power adapter is plugged directly into the wall, not into a power strip.

**Problem:**

The following error message appeared: "Error: No Driver Found"

**Solution:**

The Macintosh OS generates this message if it could not find a driver in the System Folder for the USB device you just connected. You may have forgotten to install the software that came with the device, or you may have put the device driver (i.e., the software that allows Macintosh to recognize and communicate with the USB device) in the wrong place in your System Folder.

Re-install the software driver from the VistaScan CD-ROM. Make sure the scanner extension is loaded and on.

**Problem:**

The following error message appeared: "Scanner not found" or "Unable to control scanner"

**Solution:**

Follow this procedure:

1. Confirm the scanner is plugged into the computer's USB port.
2. Go to the Apple System Profiler, listed under the Apple menu.

3. Go to the Devices & Volumes tab. Verify the scanner is listed under the USB tree as:  
Class: 0  
Product ID: 16  
Vendor ID: 5638

If not:

1. Disconnect the USB cable from the computer.
2. Go to Command, Update All Information (Command + U).
3. Reconnect the scanner, and Update All Information again. Is the scanner listed? If yes, you can begin scanning. If no, please call UMAX Technical Support.

## Additional Troubleshooting Solutions

- Try the following solutions, if you are still experiencing scanning problems:
- Plug the scanner power adapter directly into the wall outlet and not in a surge protector.
- If using a USB hub, plug the scanner directly into the Macintosh USB port.
- If you are using an iMac, do not run the scanner off the keyboard.
- Download all updates for your Macintosh for USB from the Apple's Web site <http://www.apple.com>

## SCSI Problems and Solutions

### **Problem:**

I get one of the following error messages:

**Macintosh system:** "Scanner not found or ready" error message when accessing scanner.

**Windows system:** "Scanner access fail" error message when performing scanner test.

**Solution:**

If you get one of the messages above when you run the scanner test or when you try to access the scanner, verify the items below:

- Make sure the ready light on front of the scanner is solid and not blinking.
- If you are using a PC computer, make sure your SCSI card is showing up properly in the Device Manager.
- If you are using a PC computer, make sure the scanner shows up in the Device Manager. The scanner will show under the heading Umax Series Scanners in Windows 98 and Imaging Device under Windows 95.

If the scanner appears under Scanners in the Windows Device Manager, search through the UMAX Smart Site FAQs (from the UMAX web site <http://www.umax.com>) for Adaptec. Follow those instructions.

- Make sure that the SCSI ID for the scanner does not conflict with any other SCSI devices connected to your system. The default SCSI ID setting for the scanner is 5. You may find that other SCSI devices (such as Zip drives) also use SCSI ID 5.

If you find more than one of your SCSI devices is set to the same SCSI ID, you will need to change the SCSI ID of one of the devices. Refer to your computer or SCSI adapter card documentation for instructions about changing the SCSI ID.

- The SCSI cables may not be connected properly, and/or the SCSI terminator may not be required.

There are four possible connection configurations:

- Cable connected to SCSI connector 1, no terminator
- Cable connected to SCSI connector 1, with terminator on SCSI connector 2
- Cable connected to SCSI connector 1, SCSI cable chained to another SCSI device on SCSI connector 2
- Cable connected to SCSI connector 2 no terminator

If you are having problems with the scanner, try connecting the scanner with the terminator on. If that does not correct things, try removing the terminator. You can also try flipping the cable end for end and reconnecting the cable with or without the terminator. Make sure you cycle the power to the scanner by unplugging and plugging it in. Be sure to reboot between trying different cable positions.



## Re-Install the Software

If you are using a Macintosh computer, follow the instructions below to delete and reinstall VistaScan.

1. Drag the VistaScan folder and all other references to VistaScan to the Trash.
2. Empty the Trash to complete the software removal process.
3. Drag the VistaScan folder off the VistaScan CD onto your desktop.
4. Restart your Macintosh holding down the shift keys to be sure that the extensions are turned off when you restart your system.
5. Click on the **VistaScan** folder.
6. Double-click on the VistaScan Installer icon to reinstall the software.
7. After the installation is complete, restart your Macintosh.

If you are using a PC computer and none of the solutions above solve your problem, follow the instructions below to delete and then reinstall VistaScan.

1. To close all open programs except Explorer and Systray, press the Ctrl, Alt, and Delete keys at the same time. The Close Program window appears. Highlight a program other than Explorer and Systray (**Note** some systems do not use Systray) with a single mouse click and click on the End Task button. Repeat for all programs except Explorer and Systray.
2. Click on the **Start** bar. Click on the **Settings** option. When the Settings pop-up menu appears, click on the **Control Panel** option. The Control Panel window appears. Double-click on the **Add/Remove Programs** option. Select UMAX VistaScan and then click on the **Add/Remove** button to remove the program files.
3. Click on the **Start** bar, choose **Programs** and select **Windows Explorer**. Using Windows Explorer, locate and delete the VistaScan and/or Umax folder from the C: drive.
4. Locate and delete all Twain.dll files inside the Windows folder (i.e. Twain.dll, Twain32.dll, and Twain 32.dll).
5. Right click on the **Recycle Bin** icon from the All Folders side (left side) of the Windows Explorer window. The Recycle pop-up menu appears. Choose the Empty Recycle Bin option to complete the software removal process.
6. Insert the UMAX CD-ROM and reinstall the software.

If after following the instructions in this section, you cannot solve your hardware and/or software problems, please contact UMAX Technical Support.

## Contacting Technical Support

UMAX Astra scanners are designed to be reliable, easy-to-install, and easy-to-use. If you encounter any problems while installing your scanner:

- Check out the UMAX Web site at [www.umax.com/support](http://www.umax.com/support)
- E-mail UMAX with your technical support question at: [support@umaxcare.com](mailto:support@umaxcare.com)
- Call UMAX technical support (214)739-1915
- Contact your dealer or call the UMAX support line between 9 A.M. - 5 P.M. (CST), Monday-Friday, at (214) 739-1915.

**Note:** You are eligible to receive 90-days of free technical support from the scanner purchase date. If you call after the 90-day period, you will be charged a flat fee of \$19.95 per call. All charges will be billed to your (major) credit card.

Before calling, please be sure to have the following information ready:

- The scanner model and serial number
- The version number of the scanner driver (located on the front of the CD)
- The computer model you are using
- The printer and model that you are using (if applicable)
- The application software packages that you are using
- Error codes or messages seen
- A description of what you were doing at the time of the malfunction so that the problem can be recreated
- Other observations that may aid the technician in identifying the problem and solution

When you call, please be in front of your computer. You will need to have your scanner and the computer turned on. Try to have as much information about your problem as possible. This information allows the technician to more effectively troubleshoot your problem.

## Maintenance

With the exception of periodic cleaning, the scanner is virtually maintenance-free. Please read the following section to learn how to properly maintain the scanner.

### Cleaning

Regularly cleaning the object glass will ensure that dirt or smudges will not reduce the quality of your scanned images. Before you clean the glass, make sure the scanner is turned off and the power cord is unplugged.

Clean the object glass and document cover with a soft damp cloth and a mild detergent or alcohol.

**Warning:** Do not spray the cleaning fluid directly on the object glass. Spraying the liquid directly on the glass may cause the liquid to penetrate the seams around the glass and contaminate the mirrors and lenses inside the scanner. Please be sure you spray the liquid on the cleaning cloth and then wipe the glass clean.

# Appendix A. Technical Specifications

The following table defines the technical specifications for the Astra MX3 scanner.

<b>Scanner Type</b>	1-pass color flatbed
<b>Scanning Element</b>	Color CCD
<b>Optical Resolution</b>	600 dpi x 1200 dpi
<b>Maximum Resolution</b>	9600 dpi x 9600 dpi
<b>Color Density</b>	36-bit color
<b>Light Source</b>	Cold Cathode Lamp
<b>Optics</b>	Enclosed Optical System
<b>Interface</b>	Astra MX3 - USB and SCSI-2
<b>Operating System</b>	Astra MX3 - Windows 95, 98, Mac OS 8.0+ (for iMac and USB-compatible Macintosh computers)
<b>Scanning Modes</b>	Line Art 1 bit/pixel Grayscale 12 bits/pixel internal Color 32 bits/pixel internal
<b>Data Output</b>	42-bit color (BET) 14-bit grayscale (BET)
<b>Maximum Document Size</b>	8.5" x 11.7"
<b>Scanner Dimensions</b>	18.4" x 12.2" x 3.9"
<b>Approx. Scanner Weight</b>	8.5 lbs.

## Appendix B. Using the Optional Universal Transparency Cover (UTC)

This scanner is capable of capturing transmissive images with a UTC, which gives you the capability to scan slides and transparencies. It can be difficult to get a great scan from negatives. Negative film normally contains an emulsion that affects the color of the image when scanned. Other transmissive images may appear clear, but negatives often have a muddy, brown, gray or orange tint to the image.

The VistaScan software contains a “negative” option for compensating for the inherent color bias of the emulsions. VistaScan is able to neutralize the cast of whichever emulsion type is applied to the negative, based on the type of the negative.

To achieve the best scan from a negative:

- Scan negatives and slides at the highest optical resolution the scanner supports, which is 600 dpi for this scanner. You should also try scanning at 1200 dpi to see which resolution works best for you.
- Make sure you select only the image when cropping, and do not include any extra background material.

# FCC Declaration of Conformity

Declares that the products:

Product Name: Color Scanner

Model No.: Astra MX3

FCC Rules: Tested to comply with FCC Part 15, Class B Operating Environment: For home or office use:

FCC Compliance Statement:

This device complies with part 15 of the FCC Rules. Operation is subject to the following two conditions: (1) This device may not cause harmful interference, and (2) This device must accept any interference received, including interference that may cause undesirable operation.

### **Information to user:**

This equipment has been tested and found to comply with the limits of a Class B digital device, pursuant to Part 15 of the FCC Rules. These limits are designed to provide reasonable protection against harmful interference in a residential installation. This equipment generates, uses and can radiate radio frequency energy and, if not installed and used in accordance with the instructions, may cause harmful interference to radio communications. However, there is no guarantee that interference will not occur in a particular installation. If this equipment does cause harmful interference to radio or television reception (which can be determined by turning the equipment off and on) the user is encouraged to try to correct the interference by one or more of the following measures:

Reorient/relocate the receiving antenna.

- Increase the separation between the equipment and receiver.
- Connect the equipment to an outlet different from the one to which the receiver is connected.
- Consult the dealer or an experienced radio/TV technician for help.

### **Caution:**

Changes or modifications not expressly approved by the manufacturer responsible for compliance could void the user's authority to operate the equipment.

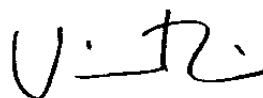
### **The party responsible for product compliance:**

Corporate Name: UMAX Technologies, Inc.

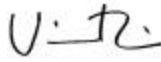
Address: 3561 Gateway Blvd., Fremont, CA 94538, USA

Telephone No.: 510-492-6000

Person responsible for making this Declaration:



Position/Title: President

Signature: 

# Warranty

## One Year Limited Warranty

UMAX Technologies, Inc. (UMAX) warrants this hardware product against defects in material and workmanship for a period of ONE (1) YEAR from the original date of purchase. Should any defect(s) be discovered, the product may be returned either to the manufacturer or an authorized UMAX service center. If you are returning product for repair, please be sure to do the following:

- 1) Call UMAX Technical Support Mon-Fri during regular business hours at (214) 739-1915 and obtain an RMA (Return Merchandise Authorization) number.
- 2) Clearly write your RMA number on the OUTSIDE of the box or package next to the shipping label.
- 3) Include a copy of the bill of sale with the returned product.
- 4) Unless otherwise instructed, do not return any manuals or software when returning items for repair.
- 5) All scanners and transparency adapters need to be locked or restrained prior to transport. Failure to lock or restrain these items could cause serious damage to the product and void the warranty.
- 6) Ship to UMAX via a traceable shipping method and retain the tracking number.

This warranty is only valid within the boundaries and territories of the USA and Canada. UMAX is not responsible for costs incurred due to shipping, insurance, customs, or duties.

UMAX is not responsible for non-traceable packages or packages shipped without a valid RMA number on the outside of the package.

This warranty does not apply if the product has been damaged by an accident, electrical fault, through misuse or abuse. If the product has been altered without written authorization by UMAX, the warranty will not be applicable.

This warranty applies only to hardware products manufactured by or for UMAX. Warranted products must bear the “UMAX” brand name, tradename, or logo. The aforementioned warranty and remedies are exclusive, and in lieu of all others, whether oral, written, expressed or implied. UMAX specifically disclaims any and all implied warranties of merchantability and fitness for a particular purpose.

UMAX is not responsible for incidental or consequential damages resulting from any breach of warranty. UMAX is not responsible under any other legal theory, including, but not limited to lost profits, and any cost of recovering reprogramming or reproducing any program or data stored in or used with UMAX products.

For more warranty information, please call UMAX at (214) 739-1915.

### Warranty Service

If your UMAX product needs to be returned for repair, you must contact UMAX technical support or your reseller in Canada prior to shipment for an RMA number before sending in the product. The RMA number is a Return Merchandise Authorization number. UMAX and UMAX Authorized Service Centers will refuse all shipments without a proper RMA number. The RMA number MUST be printed on the outside of the box or package next to the shipping label. All scanners and transparency adapters must be locked or restrained prior to transport. Failure to lock or restrain these items could cause serious damage to the product and void the warranty.



# Index

## A

- accessing online manuals, 49
- Acrobat reader, installation, 50
- adjusting brightness, tone, color, 32
- album, creating with PhotoAlbum, 46
- application, image destination, 19
- archiving scanned images, 46
- Astra MX3 Back Panel, 9

## B

- basic scanning information, 15
- black and white images, scanning, 26
- blurring images, 28
- brightness adjustment, 32

## C

- changing scale factors, 29
- changing the document source, 24
- checking connectors, 12
- choosing a printer, 18
- cleaning the scanner, 57
- color adjustment, 32
- Color Adjustment features, using, 32
- color images, scanning, 25
- Color Matching/Correction, 16
- color saturation, 34
- color spectrum wheel, 34
- configuring push buttons, 39
- connecting SCSI cable, 13
- connecting the Interface Cables, 12
- connecting the Power Adapter, 14
- connecting USB Cable, PC, 12
- connector types, 12
- copy button values, 40
- custom button values, 41

## D

- descreen feature, changing, 28
- Direct Access, VistaAccess, 36
- document cover, 9

## E

- E-mail applications, 18
- e-mail preferences, 17
- e-mailing a scanned image with VistaScan, 45

## F

- fax preferences, 17
- fax scanned images, 18
- FCC information, 60
- File icon, 17
- file size and resolution, 26
- filter setting, changing, 28
- Frame Selection tool, 21
- frame selection, removal, 31

## G

- General Preferences tab, 16
- getting to know your scanner, 9
- glossary, 60
- grayscale adjustment, 29

## H

- hardware installation, 11
- help, how to get, 49
- help, technical support, 56
- how to get help, 49
- how to scan a photo to e-mail, 45
- how to scan and print with VistaScan, 44

## I

iMac cable connection, 12  
image destinations, 22  
image tone adjustment, 33  
image type settings, 22  
image types you can scan, 25  
installing Acrobat reader, 50  
installing the Hardware, 11  
interface connectors, 12

## J

job list window, 31

## L

light/dark settings adjustment, 29

## M

Macintosh Requirements, 10  
**MagicMatch**, 17  
maintenance, 57  
Move tool, 21  
moving an image, 21  
Multiple Frame tool, usage, 31  
multiple scan mode, 31

## O

object glass, 9  
OCR, optical character recognition,  
26, 45  
OmniPage online manual,  
accessing, 49  
OmniPage, scanning and editing  
text, 45  
online manuals, 49  
optimal resolution settings, 27

## P

package contents, 8  
package contents, Astra 2000U, 8  
PhotoAlbum, creating an album  
with, 46

power adapter, connecting, 14  
power indicator, 9  
Power Saving utility, 36  
Presto! PageManager online  
manual, 49  
Preview scan, how to, 20  
Preview tools, Beginner window, 21  
print preferences, 17  
printers, choosing, 18  
printing scanned images, 18  
problems and solutions, 50  
push button scanning, 39

## R

removing a selected frame, 31  
resizing an image, 21  
resolution and file size, 26  
resolution settings, 26  
resolution settings, recommended,  
27  
resolution, changing the, 26  
rotating an image, 35

## S

save to application preferences, 17  
save to file preferences, 17  
scaling images, 29  
Scan Control Unit features, 30  
Scan Destination, 17  
scan destinations, advanced, 30  
scanner button values, 39  
scanner cleaning, 57  
scanner connectors, 11  
Scanner Information tab, 19  
scanner lamp, turning it off and on,  
36  
scanner specifications, 58  
scanning and printing with  
VistaScan, 44  
scanning basics, 15  
scanning negatives, 25  
scanning transparency, 25  
scanning, first time, 39  
SCSI address, 13  
SCSI address, changing, 13  
SCSI cable, 13

- SCSI connector, 12
- SCSI ID, 14
- selecting image destination, 22
- selecting image type, 22
- selecting multiple frames, 31
- selecting scan destinations,
  - advanced, 30
- selecting the area of an image, 21
- sending images to applications, 19
- setting up the scanner, 12
- setting VistaScan preferences, 16
- shadows, mid-level tone adjustment, 33
- sharpening image lines, 28
- Show Ruler, 17
- specifications, scanner, 58
- System Requirements, 10

## T

- Tips Help, 17
- tone adjustment, 32
- tools, VistaScan Beginner window, 21
- troubleshooting, 50
- true color, RGB, 25
- turning the scanner lamp on and off, 36

## U

- UMAX Technical Support, 56

- Universal Transparency Cover (UTC), 9, 14
- unpacking the scanner, 8
- USB cable, 12, 14
- USB connector, 7
- USB Connectors, 11
- USB port, 12
- using push buttons, 43
- using the Universal Transparency Cover, 59
- using VistaAccess, 36
- using VistaScan to scan a photo to e-mail, 45
- using VistaScan to scan and print images, 44
- UTC, 9, 14, 59

## V

- VistaScan online manual, accessing, 49

## W

- warranty, 61

## Y

- your first scan, 15, 39